



a seriousfun camp

2022 Frequently Asked Questions

The 2022 Summer Camp and Family Retreat programs are our first steps in welcoming campers, volunteers, and staff back onsite for a safe and fun camp experience. While we are confident in our reopening plan, we know that policies and protocols are subject to change as guidelines evolve. We will do our best to communicate updates in a timely manner. This document will be continuously updated, please check back often. A link to an updated version will be emailed to all participants by April 15, 2022.

General

Camper & Family

Volunteer

Staff



Roundup River Ranch is guided by our Guideposts including *Savvy About Safety* and *We're All Ears!* If you cannot find a question or answer you are looking for, please let us know.

General **FAQs**

How was the decision made to bring campers back onsite for Summer Camp and Family Retreat programs in 2022?

The Roundup River Ranch staff considered key issues involved in bringing campers back onsite including camper experiences, capacity, housing, session length, diagnosis groups served, food services and dietary needs, cleaning/ housekeeping, transportation logistics, COVID testing, vaccines, facility updates needed, program cancelation risks, staffing, and more. Based on these factors, a decision-making tool was created to help us continuously reassess our capability to safely run onsite programs with excellence. This tool, our Camp Operation Readiness Grid, will be used to track and continuously reassess our capacity to safely provide camp programming. This grid reviews a number of areas including: Community Restrictions, Infection Control Capabilities, Staffing and Supplies, Program and Facilities Capabilities, Testing Capabilities, Vaccine Availability, and Transmission Status.

Staff made the recommendation to the Board of Directors that onsite programming resume in 2022, assuming we can meet all standards in the Camp Operation Readiness Grid. In Fall 2021, the Board of Directors, approved the decision to work towards reopening the campsite for a residential camp program at approximately 55% capacity during summer camp and 66% during Family Retreats.

How will Roundup River Ranch operate in compliance with guidelines and best practices from safety and health organizations?

In designing and operating the 2022 Summer Camp program, we will be closely following summer camp guidelines from the Center for Disease Control (CDC), the Colorado Department of Public Health and Environment (CDPHE), the Colorado Department of Human Services and childcare licensing (CDHS), and the American Camping Association (ACA). We will also be operating based on recommendations from the SeriousFun Children's Network (SFCN) that were created with support from outside professionals, Environmental Health and Engineering, Inc (EH&E) specifically for camps serving children with serious illnesses. As these standards develop and evolve throughout the spring and summer, we will continuously update our own policies in compliance.

How will Roundup River Ranch determine it is safe to continue operation throughout the summer?

We will look at many aspects to determine whether it is safe to operate onsite programs throughout the summer and fall. This assessment will include topics such as COVID test positivity rate, the emergence of new COVID variants, community restrictions, staffing and supplies, program considerations, facility capabilities, and more.

What safety precautions are being taken to prevent the spread of COVID-19 at Camp?

- **Facility Improvements:** Camp-wide updates are in progress. Improvements include additions and updates to the medical center (The Depot), improved ventilation and HEPA air filters in buildings, additional outdoor eating areas, and more.
- **Pre & Post-Camp Protocols:** Campers, volunteers, and staff will all be asked to follow new protocols that minimize the risk of acquiring and spreading COVID-19 before, during and after

programs. These protocols include vaccination, pre-screening and testing before arriving at camp, testing upon arrival and during camp, and screening for symptoms after leaving camp.

- **Program Structure:** In addition to reduced capacity, many aspects of our program will be adapted. All individuals onsite will wear masks and observe physical distance from one another. Cabins will move in pods, maintaining the same campers and adults throughout the week. Small group outdoor activities will be the norm and large group activities will include each pod physically distancing from one another.
- **General Overview of Requirements:** At Roundup River Ranch, we are Savvy About Safety! To reduce the risk of COVID-19 on-site exposure and transmission, all campers, volunteers, and staff are asked to follow a strict set of requirements when on-site and throughout the 2022 summer camp and family retreat season. Please review these requirements to determine if an onsite experience is the right fit for you. If you are not able or willing to meet these requirements, or if we are unable to accommodate your personal needs, let us know during the application process and prior to arriving at Camp. If on-site programs are not the right fit for you this year, we invite you to consider the many other ways to experience Camp. We have lots of creative year-round program opportunities!
 - All participants are required to be fully immunized against COVID-19 by May 16. Medical exemptions for COVID-19 vaccines are only allowed for diagnosed campers during Family Retreat 3 (September 23-25). Siblings under the age of 5 are exempt.
 - All participants are required to have the 2021 flu vaccine by May 16. Families attending sessions in October are required to have the 2022 flu vaccine.
 - All participants and household members they live with must agree to self-monitor their health and participate in low-risk activities/ limit public exposure for 14 days prior to camp.
 - All participants are required to take a COVID-19 test prior to arrival, during check in, three days into the summer camp session, and if any symptoms present.
 - All participants must be able and willing to wear a mask throughout the day.
 - All participants must be able to provide their own transportation to and from camp, including early departure from the session if necessary. Roundup River Ranch will not provide any shuttles or rides to shuttles to or from camp. Staff are exempt due to the quarantine period during staff training.

Are there accommodations that cannot be met in 2022?

In 2022 we are regrettably unable to accommodate participants who:

- Use CPAP or BIPAP machines.
- Are unable, or unwilling, to complete nebulizer treatments outdoors.
- Due to limited food services capacity, camp can only accommodate the following special diets: vegetarian and diets free from peanut/tree nut, shellfish, gluten, and dairy. During Family Retreats (not available in summer camp due to limited storage space), families are welcome to bring food with them to accommodate their own needs.
- Camp cannot accommodate emotional support animals currently. Service dogs will be assessed on a case-by-case basis.

What are Roundup River Ranch's mask requirements?

Roundup River Ranch is committed to putting health and safety first. Everyone on the campsite will be required to wear a mask, except during designated mask breaks, and while eating, drinking, brushing teeth, showering, sleeping, taking medications or during medical

treatments. In addition to wearing a mask, physical distancing will be observed whenever possible.

- Masks will always be required by everyone, except during designated mask breaks.
- Mask breaks are times that masks are not required. Mask breaks will include when traveling outdoors in between outdoor activities; while eating, drinking, brushing teeth, showering, sleeping, taking medications or during medical treatments; while boating; and during feet off the floor time (when campers are on their own beds).
- When possible, campers, staff, and volunteers will physical distance from one another indoors and outdoors.
- Large group activities will take place in pods, with a minimum of 20 feet between each pod. Masks will always be worn. Pods will never mix in large group activities.

What type of masks are approved by Roundup River Ranch?

- Masks must always provide close fitting coverage of nose and mouth without the need to use hands to hold in place or make repeated adjustments. Surgical masks, KN95 masks, or KF94 masks are highly recommended, although multi-layered fabric mask will be allowed.
- All camp participants are responsible for providing their own suitable masks, a minimum of two per day of camp (although we strongly recommend packing extras!).
- ***Please note: Neck gaiter, ski buff, bandana style face coverings and masks incorporating a 'valve' are not effective in preventing transmission and are not suitable for use while on site at Roundup River Ranch.***

What will happen if someone shows symptoms consistent with COVID-19 while at Camp?

If someone shows symptoms that may be consistent with COVID-19 while onsite, they will be evaluated and if warranted, tested by a member of the medical staff in a safe testing location.

What will happen if someone is confirmed positive for COVID-19 while at Roundup River Ranch?

If someone onsite tests positive for COVID-19, we will continue to monitor symptoms and make a departure plan that ensures they are able to safely leave Roundup River Ranch. If the person is a minor, their parents or legal guardians will be notified immediately. We will work in accordance with our local public health department to notify and/or isolate any individuals who have had potential contact with the person. The parents and guardians of all campers onsite will also be notified if we have a positive test onsite. *For specific details concerning campers, volunteers, or staff, please see the respective FAQs.*

What are the dates of the 2022 onsite programs?

Please visit the website for the most up to date information regarding what diagnosis groups will be served during each session.

Summer Camp Session 1: June 16-20 (Volunteer orientation starts June 15)

Summer Camp Session 2: June 24-28 (Volunteer orientation starts June 23)

Summer Camp Session 3: July 7-11 (Volunteer orientation starts July 6)

Summer Camp Session 4: July 15-19 (Volunteer orientation starts July 14)

Summer Camp Session 5: July 24-28 (Volunteer orientation starts July 23)

Family Retreats: A newly imagined program that gives campers and their families the opportunity to

enjoy respite, recreation, and the joy of togetherness at Camp. Programming will focus on the family unit – each family will have their own unique schedule and will create family memories as they explore camp, enjoy nature, and rejuvenate through the power of play.

Family Retreat Session 1: July 1-3 (Volunteer orientation is July 1)

Family Retreat Session 2: September 9-11 (Volunteer orientation is September 9)

Family Retreat Session 3: September 23-25 (Volunteer orientation is September 23)

Family Retreat Session 4: October 7-9 (Volunteer orientation is October 7)

Family Retreat Session 5: October 21-23 (Volunteer orientation is October 21)

Will special guests and visitors be allowed on camp during session?

No. Due to the limited capacity of individuals allowed on camp, and our strong focus on keeping cabins in self-contained pods, we will not incorporate special guests or visitors into this year's program schedule. Those individuals still interested in volunteering are encouraged to complete the volunteer application for day volunteer opportunities throughout the summer.

Will tours be allowed at camp this year?

Tours will only be available during camper's afternoon break, "Feet Off the Floor Time" and in between sessions. Tours will look very different this year with a focus on the beautiful campsite. To protect our campers, buildings will not be available for tours and tour guests will not interact with campers, volunteers, or staff working with campers. Health screenings and masks will be required.

What opportunities are available to stay connected with Roundup River Ranch?

While we are operating at reduced capacity onsite, we will have lots of other opportunities to stay connected! We hope you choose to participate in a way that supports you. Please visit www.RoundupRiverRanch.org for a full list of opportunities.

Offsite, In-Person Options

- **Camper Reunions:** Camper Reunions will be held throughout the year, with a primary focus in the greater Denver area. These in-person experiences are family events. Please keep an eye on your email for dates and more information! The website will also be updated regularly.

Camp Online Options

- **Summer Camp Online:** All campers (ages 7-17) and their siblings, regardless of diagnosis and in-person participation, are welcome to sign up for Summer Camp Online August 1-5.
- **Family Camp Online:** All campers (ages 5-17) and their families, regardless of diagnosis and regardless of in-person participation, are welcome to sign up for one or both Family Camp Online sessions February 4-6, 2022, and October 28-30, 2022.
- **Camp Clubs:** Camp Clubs (ages 7-17) are month long programs that meet for an hour one evening per week.
- **Camper Reunions Online:** Online camper reunions (ages 7-17) last a couple of hours and are a great way to reconnect for a barrel of laughs. Keep an eye on your email for dates and details!

Knock, Knock! Special Delivery!

- **Joy, Delivered:** Enjoy fun activities delivered right to your doorstep! Each delivery contains activities that inspire creativity, compassion, teamwork, and play. Sign up once for the year to receive four special deliveries – two boxes and two envelopes of joy!
- **Follow Us on Social Media:**
We will continue to post important updates about camp, future programs, and fundraisers on Facebook and Instagram. Follow us to stay connected!



Camper & Family **FAQs**

Camper Eligibility

Who is eligible to apply as a camper for the 2022 Summer Camp and Family Retreat programs?

Camper eligibility requirements:

- 7-17 years of age with a qualifying medical diagnosis. Please see a complete list at www.roundupriverranch.org/campers/camper-eligibility.
- **New!** Can successfully wear a mask throughout the day.
- **New!** Are fully vaccinated for COVID-19.
- **New!** We are monitoring community spread in our own region as well as regions from which campers will be travelling. If a camper resides outside of Colorado, we will evaluate the application based on that camper's local community spread, travel restrictions, and mode of transportation. We cannot accept campers who require airline travel to get to camp.
- **New!** To maximize the number of campers we are able to serve on-site due to reduced capacity, each diagnosis group is only being served once – either in Summer Camp or in a Family Retreat. Campers are only able to attend during the session for their specific diagnosis group. If you believe your campers qualifies for more than one session due to multiple diagnoses, please reach out to the Camper Admissions team to help decide which session is the best fit for your family

How much does it cost to attend the Summer Camp Program?

All Roundup River Ranch programs are offered FREE of charge to our campers and families.

Are 18 and 19-year-olds who were supposed to attend their last session in 2020 or 2021 eligible for Summer Camp programs?

We are unable to host campers above the age of 17 due to our childcare license.

Which sessions can siblings attend?

Siblings are eligible to attend all Camp Online programs, in-person Camper Reunions, and Family Retreats. Due to limited capacity, we are not accepting sibling applications for in-person Summer Camp programs.

Are there any accommodations that cannot be made for onsite programming this year?

In 2022, we are regrettably unable to accommodate for participants In 2022 we are regrettably unable to accommodate participants who:

- Use CPAP or BIPAP machines.
- Are unable, or unwilling, to complete nebulizer treatments outdoors.
- Due to limited food services capacity, camp can only accommodate the following special diets: vegetarian and diets free from peanut/tree nut, shellfish, gluten, and dairy. During Family Retreats (not available in summer camp due to limited storage space), families are welcome to bring food with them to accommodate their own needs.

- Camp cannot accommodate emotional support animals currently. Service dogs will be assessed on a case-by-case basis.

Are there travel restrictions for campers coming to Roundup River Ranch?

We cannot accept campers who require airline travel to get to camp. In compliance with current CDC and Colorado guidelines, we are monitoring community spread in our own region as well as regions from which campers will be travelling. Currently, all guidelines discourage travel by mass public transit such as train, bus, or airplane so campers who live within driving distance of camp will be prioritized.



A very limited number of seats (10 per session) will be available for campers on the Roundup River Ranch bus from the Denver area. These seats will be prioritized based on financial or medical need.

Camper Application Process

How does the camper application process work for the 2022 Summer Camp Program?

Camper applications for Summer Camp and Family Retreats will become available on January 3, 2022, online at www.roundupriverranch.org/campers/apply-for-camp.

- **Summer Camp** applications will be accepted through Friday, March 18 at 5:00pm MST. Families will be notified of the lottery process results for Summer Camp by April 15. Campers who are selected through the lottery process will be notified by email and will then have two weeks to complete all registration forms. Once these forms are reviewed by the staff team, an official camper acceptance will be sent out.
- **Family Retreat 1** applications will be accepted through Friday, April 15 at 5:00pm MST. Families will be notified of the lottery process results for Family Retreat 1 by May 13. Camper families who are selected through the lottery process will be notified by email and will then have two weeks to complete all registration forms. Once these forms are reviewed by the staff team, an official camper acceptance will be sent out.
- **Family Retreat 2-5** applications will be accepted through Wednesday, June 1 at 5:00pm MST. Families will be notified of the lottery process results for Family Retreats 2-5 by July 15. Camper families who are selected through the lottery process will be notified by email and will then have two weeks to complete all registration forms. Once these forms are reviewed by the staff team, an official camper acceptance will be sent out.

Applications will be reviewed by a staff team to ensure completion and eligibility. Then, a lottery system will be used to fill spots. **Camper aged 16 and 17 will be prioritized due to aging out.** After this age group is prioritized, a lottery system will be used to fill remaining available spots. Being selected by the lottery does not guarantee a spot. A camper is officially accepted with a reserved spot after the camper family completes the registration forms **and** the registration forms are reviewed by staff. All application, lottery, and registration forms communications will be sent via email.

If things are missing from the application, will I be notified?

Yes, an email will be sent with the status of your child's application and a list of missing items **prior** to the application deadline. Applications must be complete by the deadline.

Why use a lottery system this summer rather than the typical first-come, first-serve method?

We will be serving approximately 40 campers per session (55%) during summer camp and 12 families (66%) for family retreats. It is likely that the number of applicants will exceed the number of spots we have available. The lottery is a selection process that will help ensure all applicants have an equal chance of being selected.

What are the chances my child will be selected in the lottery?

Camper selection in the lottery will depend on the number of eligible applications received. There is no way to predict if your application will be selected by the lottery, but we strongly encourage all interested campers to apply.

When will I know if my child has a spot in the 2022 programs?

Families will be notified of the lottery process results for summer camp by April 15, 2022. Families will be notified of the lottery process results for family retreats by May 13, 2022, for Family Retreat 1 and by July 15, 2022, for Family Retreats 2-5.

How will the Waitlist work?

Applicants not initially selected in the lottery process are immediately eligible to sign up for the Waitlist to be notified if a spot becomes available. Due to extensive pre-screen process, we will only be able to call campers off the Waitlist up until two weeks before each session begins. All wait-listed campers are immediately eligible to register for Summer Camp Online.

Why do I need to fill out registration forms if my family is chosen in the lottery? Didn't we already apply?

Our goal is to simplify and streamline the application process. Once an application is chosen in the lottery, we will finalize the application with a final registration form, completing the information staff need to safety care for your child at camp.

Camper Session Dates & Schedule

What are the session dates of the 2022 Summer Camp Program?

Summer Camp Session 1: June 16-20 (Volunteer orientation starts June 15)

Summer Camp Session 2: June 24-28 (Volunteer orientation starts June 23)

Summer Camp Session 3: July 7-11 (Volunteer orientation starts July 6)

Summer Camp Session 4: July 15-19 (Volunteer orientation starts July 14)

Summer Camp Session 5: July 24-28 (Volunteer orientation starts July 23)

Family Retreat Session 1: July 1-3 (Volunteer orientation is July 1)

Family Retreat Session 2: September 9-11 (Volunteer orientation is September 9)

Family Retreat Session 3: September 23-25 (Volunteer orientation is September 23)

Family Retreat Session 4: October 7-9 (Volunteer orientation is October 7)

Family Retreat Session 5: October 21-23 (Volunteer orientation is October 21)

What time should we arrive on the first day and depart on the last day of camp?

Check-in and check-out times will vary. Campers will be assigned a specific time in their confirmation email.

How will the session schedule differ in 2022 than in past summers?

We will host five Summer Camp sessions that are five days each and five Family Retreats that are three days each. The daily camp schedule will remain relatively intact with designated activity area times, mealtimes, rest time, and evening activities. Cabins will travel together in pods, maintaining the same campers, counselors, and volunteers throughout the session. Campers will be able to participate in many of the same camp activity areas, but large camp-wide events will consist of pods physically distancing from one another (20+ feet) in a large outdoor space. We are not able to offer horseback riding or high ropes this year. We are thrilled to introduce some new activities including low ropes!



Can my child attend an in person summer camp and summer camp online?

Absolutely! Whether you join us in person at the campsite or not, ALL campers and siblings are invited to Summer Camp ONLINE and Family Camp ONLINE. Please visit www.RoundupRiverRanch.org for more information.

Can I stay with or visit my child while they are at Summer Camp?

No, the summer program is a residential program for youth campers only. Parents and family members are not permitted to stay at Roundup River Ranch and visitors will not be allowed onsite during sessions. We are happy to recommend hotels in the area to stay nearby during your child's session.

For additional information on area attractions, visit:

www.visitvailvalley.com

www.visitglenwood.com

www.exploresummit.com

Safety Protocols

Are campers required to receive the COVID-19 vaccine to attend the 2022 Summer Camp and Family Retreat programs?

- **Summer Camp** – Campers must have completed their vaccination for COVID-19 prior to arriving on site. This means that the second dose of an mRNA vaccine (Pfizer, Moderna) or the first dose of a 1 dose vaccine (Johnson and Johnson) must be received at least 2 weeks before a camper arrives to camp.
- **Family Retreats** – All family members eligible to receive the COVID-19 vaccine will be required to have completed their vaccination for COVID-19 prior to arriving onsite. This means that the second dose of an mRNA vaccine (Pfizer, Moderna) or the first dose of a 1 dose vaccine (Johnson and Johnson) must be received at least 2 weeks before a camper arrives to camp. Only medical

exemptions (with a physician letter) and age exemptions (children too young to receive the vaccine) will be accepted for Family Retreats.

What COVID precautions will be required of campers for Summer Camps and Family Retreats?

- **Before Arriving at Camp:** A member of our medical team will be calling all camper families two weeks prior to their session to perform a pre-screen. We ask that families self-monitor for COVID-19 symptoms and practice low-risk behaviors in the weeks before camp: avoid large gatherings, maintain physical distance, wear a mask around others, etc. Campers will be asked to submit a negative PCR test within 72 hours before their scheduled arrival. Proof of COVID-19 vaccination completion will be required.
- **While at Camp:** Campers will be screened for COVID-19 related symptoms and take a COVID-19 test during the check-in process and routinely throughout their session. Cabins will move in pods, maintaining the same campers, counselors, and volunteers throughout the week. Everyone will be required to wear a face mask onsite and observe physical distance when possible. Masks are not required while sleeping or eating, while boating, and during planned mask breaks throughout the day. Proper handwashing and coughing techniques will be encouraged.
- **After Leaving Camp:** Camper families will be asked to report any COVID-19 related symptoms or positive COVID-19 test results up to two weeks after their camper's session ends.

What are Roundup River Ranch's mask requirements?

Roundup River Ranch is committed to putting health and safety first. Everyone on the campsite will be required to wear a mask, except during designated mask breaks, and while eating, drinking, brushing teeth, showering, sleeping, taking medications or during medical treatments. In addition to wearing a mask, physical distancing will be observed whenever possible.

- Masks will always be required by everyone, except during designated mask breaks.
- Mask breaks are times that masks are not required. Mask breaks will include when traveling outdoors in between outdoor activities; while eating, drinking, brushing teeth, showering, sleeping, taking medications or during medical treatments; while boating; and during feet off the floor time (when campers are on their own beds).
- When possible, campers, staff, and volunteers will physical distance from one another indoors and outdoors.
- Large group activities will take place in pods, with a minimum of 20 feet between each pod. Masks will always be worn. Pods will never mix in large group activities.

What type of masks are approved by Roundup River Ranch?

- Masks must always provide close fitting coverage of nose and mouth without the need to use hands to hold in place or make repeated adjustments. Surgical masks, KN95 masks, or KF94 masks are highly recommended, although multi-layered fabric mask will be allowed.
- All camp participants are responsible for providing their own suitable masks, a minimum of two per day of camp (although we strongly recommend packing extras!).
- ***Please note: Neck gaiter, ski buff, bandana style face coverings and masks incorporating a 'valve' are not effective in preventing transmission and are not suitable for use while on site at Roundup River Ranch.***

What happens if a camper shows symptoms consistent with COVID-19 while at camp?

- **Summer Camp:** If a camper shows symptoms consistent with COVID-19 while onsite, the cabin nurse will accompany the camper to the medical center for further evaluation and possible testing.
- **Family Retreat:** If a participant shows symptoms consistent with COVID-19 while onsite, we will communicate and coordinate immediately with the entire family. Medical staff will evaluate to determine the need for possible testing.

What happens if someone tests positive for COVID-19 while at Roundup River Ranch?

If someone tests positive for COVID-19 while onsite, we will continue to monitor their symptoms. If the participant is a minor, we will work with a parent or legal guardian to create a safe departure plan. We will also work in accordance with CDPHE and CDHS to notify and/or isolate individuals who have had potential contact with the camper. Parents and guardians of all campers onsite will be notified of positive cases. During Family Retreats, if a family member tests positive for COVID-19 while onsite, we will work with the family to create a safe departure plan for the entire family and communicate with other families onsite.



If my child or our family has been vaccinated against COVID-19, will they need a negative test before arriving at camp?

Yes, all participants will be required to provide a negative COVID-19 test before arriving at Roundup River Ranch.

When will more detailed information become available?

Campers will receive an updated version of this FAQ document, including more details, on April 15, 2022. Families will be asked to review this document to ensure camp is the right fit for them in 2022.

Volunteer FAQs

Volunteer Positions & Eligibility

How will volunteer positions differ in 2022 from past summers?

The heart of volunteering at Roundup River Ranch will be the same! There will still be multiple ways to volunteer, but we have adapted the positions to reduce the risk of spreading COVID-19. We are hiring a reduced volunteer team that maintains a safe and compliant camper to staff ratio.

- **Session Volunteer:** This is a residential position where individuals will join a cabin as part of the counselor team to help care for and supervise campers.
 - **New!** Cabins will travel together in pods, maintaining the same campers, counselors, and volunteers throughout the session.
 - **New!** During Summer Camp, Cabin Nurse Volunteers will be housed in their assigned cabin throughout the camp session.
- **Day Volunteers:** This is a daytime position where individuals will help support the operation of camp by supporting in the areas of food services, housekeeping, or facilities.
 - **New!** Day Volunteers are critical to make camp possible but will not have direct interaction with campers this year.

Who is eligible to apply as a volunteer for the 2022 camp season?

Volunteer eligibility requirements:

- Prior experience working with children.
- **Session Volunteers:** at least 19 years of age.
- **Day Volunteers:** at least 16 years of age.
- **New!** Can successfully wear a mask throughout the day.
- **New!** All volunteers must be able to provide their own transportation to and from camp, including early departure from the session if necessary. Roundup River Ranch will not provide any shuttles or rides to shuttles from camp.

Volunteer eligibility will depend on the successful completion of an online application – including but not limited to a background check, references, interview, health history and immunization information.

Are there any accommodations that cannot be made for onsite programming this year?

In 2022, we are regrettably unable to accommodate for participants. In 2022 we are regrettably unable to accommodate participants who:

- Use CPAP or BIPAP machines.
- Are unable, or unwilling, to complete nebulizer treatments outdoors.
- Due to limited food services capacity, camp can only accommodate the following special diets: vegetarian and diets free from peanut/tree nut, shellfish, gluten, and dairy. During Family Retreats

(not available in summer camp due to limited storage space), families are welcome to bring food with them to accommodate their own needs.

Are there travel restrictions for volunteers coming to Roundup River Ranch?

In compliance with current CDC and Colorado guidelines, we are monitoring community spread and updated travel guidance. If you have concerns about transportation, please indicate your needs on your application. For volunteers who are unable to attend in-person programs, we strongly encourage you to apply for Camp Online programs including Summer Camp Online and Family Camp Online!

Volunteer Application Process

How does the volunteer application process work for the 2022 Summer Camp Program?

Volunteer applications for Summer Camp and Family Retreats will become available on November 15, 2021, online at www.roundupriverranch.org/volunteer/apply-to-volunteer. As soon as the application is complete, applicants will be contacted to schedule an interview. **Although volunteers will be accepted on a rolling basis, please note we will make a final assessment of Summer Camp planning on April 1, 2022.*

When will I know if I have a position in the 2022 Summer Camp Program?

We aim to notify applicants about the status of their volunteer application on a rolling basis as applications and volunteer requirements are fully complete.

Volunteer Session Dates & Schedule

What are the training and session dates of the 2022 in-person programs at Camp?

Session Volunteers will attend a mandatory training onsite at Roundup River Ranch before their position begins. Day Volunteers will complete online training in addition to in-person training prior to beginning in their role. More details will be provided prior to your start date.

Summer Camp Session 1: June 16-20 (Volunteer orientation starts June 15)

Summer Camp Session 2: June 24-28 (Volunteer orientation starts June 23)

Summer Camp Session 3: July 7-11 (Volunteer orientation starts July 6)

Summer Camp Session 4: July 15-19 (Volunteer orientation starts July 14)

Summer Camp Session 5: July 24-28 (Volunteer orientation starts July 23)

Family Retreat Session 1: July 1-3 (Volunteer orientation is July 1)

Family Retreat Session 2: September 9-11 (Volunteer orientation is September 9)

Family Retreat Session 3: September 23-25 (Volunteer orientation is September 23)

Family Retreat Session 4: October 7-9 (Volunteer orientation is October 7)

Family Retreat Session 5: October 21-23 (Volunteer orientation is October 21)

How will the session schedule differ this summer than in summers past?

We will host five summer sessions that are five days each and five family retreats that are three days each. The daily camp schedule will remain relatively intact with designated activity area times, mealtimes, rest time, and evening activities. Cabins will travel together in pods, maintaining the same campers, counselors, and volunteers throughout the session. Campers will be able to participate in the many of the same camp activity areas, but large camp-wide events will be divided into small-group

outdoor activities. We will not be offering horseback riding or high ropes this year. But we are excited to introduce some new activities including low ropes!



Safety Protocols

Are volunteers required to receive the vaccine before participating?

Yes, all volunteers will be required to receive the COVID-19 vaccine before arriving onsite for the 2022 Summer Camp or Family Retreat programs.

What COVID-19 precautions will be required of volunteers this summer?

- **Before Arriving at Camp:** Volunteers will be asked to self-monitor for symptoms, avoid large gatherings, maintain physical distance, and wear a mask when around others in the two weeks prior to arriving at camp. Volunteers must be fully vaccinated and will need to submit a negative PCR test before arrival.
- **While at Camp:** Volunteers will be required to wear a face mask and observe physical distance from others while onsite. We ask that everyone help in sanitizing common areas and maintaining personal hygiene through proper hand washing and coughing techniques. Session Volunteers will stay onsite at all times during their assigned session(s).
- **After Leaving Camp:** Volunteers will be asked to self-monitor and report any symptoms or positive PCR test results up to two weeks after their time at camp ends.

What are Roundup River Ranch's mask requirements?

Roundup River Ranch is committed to putting health and safety first. Everyone on the campsite will be required to wear a mask, except during designated mask breaks, and while eating, drinking, brushing teeth, showering, sleeping, taking medications or during medical treatments. In addition to wearing a mask, physical distancing will be observed whenever possible.

- Masks will always be required by everyone, except during designated mask breaks.
- Mask breaks are times that masks are not required. Mask breaks will include when traveling outdoors in between outdoor activities; while eating, drinking, brushing teeth, showering, sleeping, taking medications or during medical treatments; while boating; and during feet off the floor time (when campers are on their own beds).
- When possible, campers, staff, and volunteers will physical distance from one another indoors and outdoors.
- Large group activities will take place in pods, with a minimum of 20 feet between each pod. Masks will always be worn. Pods will never mix in large group activities.

What type of masks are approved by Roundup River Ranch?

- Masks must always provide close fitting coverage of nose and mouth without the need to use hands to hold in place or make repeated adjustments. Surgical masks, KN95 masks, or KF94 masks are highly recommended, although multi-layered fabric mask will be allowed.
- All camp participants are responsible for providing their own suitable masks, a minimum of two per day of camp (although we strongly recommend packing extras!).

- ***Please note: Neck gaiter, ski buff, bandana style face coverings and masks incorporating a 'valve' are not effective in preventing transmission and are not suitable for use while on site at Roundup River Ranch.***

What happens if a volunteer shows symptoms consistent with COVID-19 while at Camp?

If a volunteer shows symptoms consistent with COVID-19 while onsite, the cabin nurse or a member of the medical team will evaluate to determine the need for further testing.

What happens if a volunteer tests positive for COVID-19 while at Roundup River Ranch?

If a volunteer tests positive for COVID-19 while at Roundup River Ranch, we will continue to monitor their symptoms and make a departure plan that ensures they are able to safely leave Camp. If the volunteer is a minor, their parents or legal guardians will be notified immediately. The volunteer will remain in isolation until retrieved by family/caregivers or they are able to drive themselves home. We will also work in accordance with CDPHE and CDHS to notify and/or isolate individuals who have had potential contact with the person.

If I have been vaccinated against COVID-19, will I need a negative test before arriving at camp?

Yes, all participants will be required to provide a negative PCR test before arriving at Roundup River Ranch.

When will more detailed information become available?

Volunteers will receive an updated version of this FAQ document, including more details, on April 15, 2022. Volunteers will be asked to review this document to ensure camp is the right fit for them in 2022.



Staff FAQs

Staff Positions & Eligibility

How will staff positions differ in 2022 from past summers?

Please see our staff webpage to view all available 2022 staff positions and how they will differ. A brief overview...

- We are hiring a reduced staff team that maintains a safe and compliant camper to staff ratio.
- **Cabin Counselors** will provide direct care for camper and facilitate all activities.
- **Food Services and Housekeeping Staff** will be hired to support these critical areas. **New!** These staff will not join a cabin after their shift to ensure cabin pods remain consistent.

Who is eligible to apply as a staff member for the 2022 Summer Camp Program?

Eligibility requirements:

- 19 years of age for Cabin Counselors.
- **New!** 18 years of age for Food Service and Housekeeping residential positions. 16 years of age for non-residential positions.
- **New!** Can successfully wear a mask throughout the day.
- **New!** Are fully vaccinated for COVID 19.
- See job description and website for details.

Essential Functions:

- Must be able to provide complete, independent personal care for yourself regarding hygiene maintenance, medical needs, and medication administration.
- Must be physically and mentally able to work 12-hour shifts with limited breaks.
- Cabin Counselor: Must be able to provide personal care for campers including bathing, toileting, changing diapers, dressing, transferring children out of their wheelchair, etc.
- Cabin Counselor: Must possess the physical, mental and emotional strength and stamina to maintain constant supervision of campers for the duration of the season.
- Cabin Counselor: Be able to push, pull, lift, and carry items up to 50 pounds.
- Cabin Counselor: Be able to supervise and instruct campers; will require the ability to walk, sit, climb, kneel, crouch, and stand.

Are there travel restrictions for staff coming to Roundup River Ranch?

Not currently. In compliance with current CDC and Colorado guidelines, we are monitoring community spread and updated travel guidance. All staff will be required to complete regular testing upon arrival. If you have concerns about transportation, please indicate your needs on your application. Travel restrictions will be analyzed on an ongoing basis.

Staff Application Process

How does the staff application process work for the 2022 Summer Camp Program?

The staff application will be launched on **November 15, 2021**, at <https://roundupriverranch.org/about-us/employment/>. Please complete applications as quickly as possible. As applications are received, we will review, and then schedule eligible applicants for an interview. Staff applications will close when all positions have been filled.

When will I know if I have a position in the 2022 Summer Camp Program?

Applicants are notified of employment decisions on a rolling basis.

Staff Session Dates & Schedule

What are the training and session dates of the 2022 Summer Camp Program?

Hired staff will have virtual and in-person training sessions throughout the summer. Staff are expected to work all Volunteer Orientation dates. Please visit the website for the most up to date information regarding what diagnosis groups will be served during each session.

Leadership Staff Training: May 30 (7:00-8:00pm MST check in) – June 2

Virtual Information Session: TBD

Staff Arrival Day: June 2 (7:00-8:00pm MST check in)

Staff Training: June 2-June 12

Summer Camp Session 1: June 16-20 (Volunteer orientation starts June 15)

Summer Camp Session 2: June 24-28 (Volunteer orientation starts June 23)

Family Retreat Session 1: July 1-3 (Volunteer orientation is July 1)

Summer Camp Session 3: July 7-11 (Volunteer orientation starts July 6)

Summer Camp Session 4: July 15-19 (Volunteer orientation starts July 14)

Summer Camp Session 5: July 24-28 (Volunteer orientation starts July 23)

Summer Camp Clean Up and Closure: July 29

Staff Departure Day: July 30, 2022, 10:00am MST check out

How will the session schedule differ this year than in years past?

The Summer Camp season will include five summer sessions that are five days each and one Family Retreat that is three days. The daily camp schedule will remain relatively intact with designated activity area times, mealtimes, rest time, and evening activities. Cabins will travel together in pods, maintaining the same campers, counselors, and volunteers throughout the session. Campers will be able to participate in the many of the same camp activity areas, but large camp-wide events will be divided into small-group outdoor activities. We will *not* be offering horseback riding or high ropes this year. But, we are excited to introduce some new activities including low ropes!



Safety Protocols

Are staff members required to receive the vaccine before participating in Summer Camp Programs?

Yes, all staff will be required to receive the COVID-19 vaccine before arriving onsite for the 2022 Summer Camp or Family Retreat programs.

What COVID-19 precautions will be required of staff this summer?

- **Before Arriving at Camp:** Staff will be asked to self-monitor for symptoms, avoid large gatherings, maintain physical distance, and wear a mask when around others in the two weeks prior to arriving at camp. Staff must be fully vaccinated and will need to submit a negative PCR test before arrival.
- **While at Camp:** Immediately upon arrival, staff can expect to take a rapid test that is coordinated by the Roundup River Ranch medical team. Three days after arrival and seven days after arrival, staff will be required to take additional rapid tests, also coordinated by the medical team. Staff will also take COVID-19 tests at the beginning and end of each session and as needed for suspected symptoms. Staff will be required to wear a face mask and observe physical distance from others while onsite. We ask that everyone help in sanitizing common areas and maintaining personal hygiene through proper hand washing and coughing techniques. Residential staff will stay onsite at all times during sessions.
- **After Leaving Camp:** Staff will be asked to self-monitor and report any symptoms or positive COVID test results up to two weeks after their time at camp ends.

What happens if a staff member shows symptoms consistent with COVID-19 while at Camp?

If a staff member shows symptoms consistent with COVID-19 while onsite, the cabin nurse or a member of the medical team will evaluate to determine the need for further testing.

What happens if a staff member tests positive for COVID-19 while at Camp?

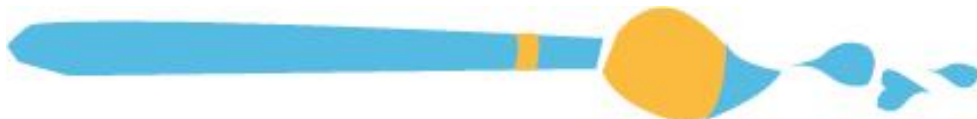
If a staff member tests positive for COVID-19 while at Roundup River Ranch, we will continue to monitor their symptoms and make a departure plan that ensures they are able to safely leave Camp. The staff member will remain in isolation until retrieved by family/caregivers or they are able to drive themselves home. We will also work in accordance with CDPHE and CDHS to notify and/or isolate individuals who have had potential contact with the person.

If I have been vaccinated against COVID-19, will I need a negative test before arriving at camp?

Yes, all residential staff will be required to provide a negative PCR test before arriving at Roundup River Ranch. Non-residential staff will be screened daily and routinely tested.

When will more detailed information become available?

Staff will receive an updated version of this FAQ document, including more details, on April 15, 2022. Staff will be asked to review this document to ensure camp is the right fit for them in 2022.





HAVE MORE QUESTIONS?

We're all ears! Please reach out. We would love to hear from you.

Camper and Family

Camper@RoundupRiverRanch.org
970-524-2267

Volunteer

Volunteer@RoundupRiverRanch.org
970-524-2267

Staff

HR@RoundupRiverRanch.org
970-524-2267

We're all ears.

We value respectful, clear, open minded, transparent and direct communication. We listen carefully and intently to others and then use integrity, compassion and kindness when we speak.