



Look at all you helped make possible

HERE.

2019 Impact Report



**ROUNDUP
RIVER RANCH**

a seriousfun camp

OUR MISSION

Roundup River Ranch enriches the lives of children with serious illnesses and their families by offering free, medically-supported camp programs that provide unforgettable opportunities to discover joy, friendships, and confidence.



Dear Friends and Supporters,

HERE, is where the magic happens. At Roundup River Ranch, kids who are afraid of heights fly through the air on a zipline. Kids who have never met a horse, find themselves falling in love with one. And kids who thought they were alone in their journey meet new friends who share scars, stories, support, and love.

You helped make all that and more possible in 2019. Just look what your generosity powered:

- We provided more than 1,900 camper experiences.
- We engaged over 1,200 volunteers who provided nearly 26,500 hours of service.
- We grew our overall Camper Reunion participation by 33%!
- We provided camper experiences to 291 children with rare diseases. In total, we supported campers living with 138 different rare diseases on-site throughout the summer and fall.
- We enhanced our Nature and Discovery programming by adding solar powered fun! Campers used the sun's light and heat as energy as they created electrical currents that powered boats that cruised our lake and mechanical bugs that crawled across the grounds.

We look forward to 2020 with excitement, gratitude, and lots of energy as we get ready to serve more campers and their families. Here is where our heart is. Here is where our passion lies. Here is where we all help to create life-changing experiences.

With grateful hearts,

Cathie

Cathie Bennett, JD
Chair, Board of Directors



Ruth

Ruth B. Johnson, JD
President & CEO



98%

of campers reported that they understood how someone felt. That demonstrates a strong sense of compassion and understanding.

HERE'S WHAT'S INSIDE!

- [Our Mission / 2](#)
- [Executive Overview / 3](#)
- [Camp By Numbers / 6](#)
- [Camp Highlights / 8](#)
- [Camper Spotlight / 10](#)
- [Volunteer Spotlights / 12](#)
- [Family Camp Impact / 14](#)
- [An Eventful Year / 16](#)
- [Summer Camp Impact / 18](#)
- [Strategic Plan Update / 19](#)
- [Financials / 20](#)
- [A Day In The Life of A Camper / 21](#)
- [A Case Study: Asthma / 22](#)
- [In Memoriam / 23](#)
- [2020 Camp Theme / 26](#)
- [Embrace Joy Movement / 27](#)
- [Corporate Spotlights / 28](#)
- [Medical Partners & Advisors / 29](#)
- [Leadership / 31](#)
- [Mission Supporters / 33-43](#)



CAMP BY THE NUMBERS

1,907
TOTAL CAMPER
EXPERIENCES

380 
SUMMER CAMP EXPERIENCES

488 
FAMILY CAMP EXPERIENCES

952 
CAMPER REUNION EXPERIENCES

87 
CAMPER AMBASSADOR EXPERIENCES

64,902
TOTAL ON-SITE
CARE HOURS



Hours spent with campers provide opportunities for them to learn, grow, and realize how they can succeed when they return to their homes and communities.



321
FIRST-TIME
CAMPER^{*}
(Represents 37%)



547
RETURNING
CAMPER^{*}
(Represents 63%)

6 SUMMER CAMP
SESSIONS



8 FAMILY CAMP
SESSIONS

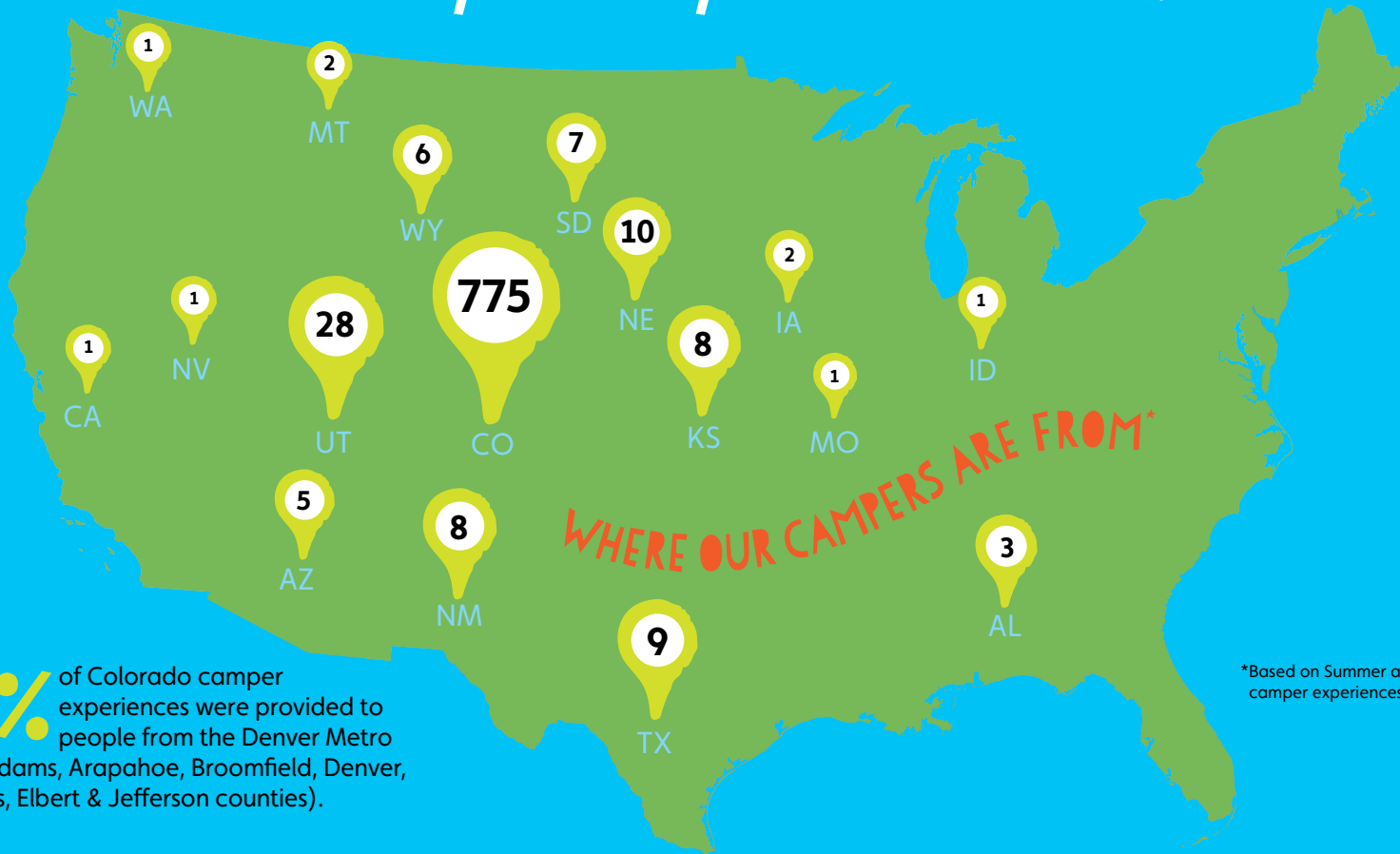


4 CAMPER
REUNIONS



* Based on Summer and Family camper experiences.

CAMPERS FROM ALL OVER CALL HERE THEIR "HAPPY, HAPPY, HAPPY PLACE."



63% of Colorado camper experiences were provided to people from the Denver Metro Area (Adams, Arapahoe, Broomfield, Denver, Douglas, Elbert & Jefferson counties).

*Based on Summer and Family camper experiences.

During the 2019 camp season, we welcomed campers with illnesses that fell within the following 22 diagnostic categories:



- Acquired Immunodeficiency
- Asthma (moderate to severe)
- Bone Marrow/Stem Cell Transplant
- Brain Tumors
- Cancer
- Celiac Disease
- Craniofacial Anomalies
- Dermatologic Disorders (life-altering)
- Eosinophilic Esophagitis
- Epilepsy**
- Gastrointestinal Disorders
- Heart Disease (acquired and congenital)
- Heart Transplant
- Hematologic Disorders
- Kidney Disease
- Kidney Transplant
- Liver Disease
- Liver Transplant
- Lung Disease
- Neurologic Disorders
- Sickle Cell Disease*
- Type 1 Diabetes**

* Indicates that this diagnosis was served during Summer Camp only. ** Indicates that this diagnosis was served during Family Camp only.

164

pounds of spaghetti served
(including 91 pounds of
gluten-free spaghetti).
Sluuuurp.



YOU KNOW WHAT KIDS NEVER HEAR HERE? THE WORD "CAN'T."

Camp makes a huge difference in the lives of kids with serious illnesses. In 2019, you helped us provide moments that created hope, healing, and improved social and emotional skills that last long after the final campfire and s'mores.

10
BIRTHDAYS
CELEBRATED
AT CAMP
Whooh-hoo!

1,127
S'MORES SERVED
Mmmmmm.

615
HORSEBACK RIDES
Giddy-up!



825
ZIPLINE RIDES
Wheee!

134
STAGE NIGHT
PERFORMANCES
Encore!

15,557
BEADS IN THE
CELEBRATE U JAR
Hooray!

Each bead celebrates achievements, happy moments, and more!

1,907
CAMPER EXPERIENCES
Yay!

"The other girls in my cabin assured me that I am not alone in this struggle. I found a sisterhood at camp, and I am so grateful for their friendships." – Emmory, Camper



my dog is my best friend

ONE OF THE MOST UNIQUE THINGS ABOUT BEING HERE IS FINDING OTHERS ON A SIMILAR JOURNEY.

To Emmory, camp was life-changing.

My name is Emmory McQueen and I attended Summer Camp at Roundup River Ranch for the first time during the 2019 camp season. Five years ago, I was a normal 7th grader and competitive swimmer. I loved to hike, ski, and travel. But what started out as sudden shoulder pain ended up being debilitating pain and nausea, so bad that I literally stopped eating. After a frustrating and traumatic journey to find answers, it was determined that I had MALS = Median Arcuate Ligament Syndrome. I was also diagnosed with severe gastroparesis, intestinal dysmotility, and a genetic condition called Ehlers Danlos Syndrome – a connective tissue disorder that causes problems with my joints, hypermobility, chronic pain, intestinal failure, and the list goes on.

All week, people strategized with me to make sure my conditions didn't prevent me from having fun. We accomplished that goal every single day.

I will have to deal with my body and its idiosyncrasies for the rest of my life. That's why my time at camp was a wonderful break. Camp gave me independence. I am 17 years old and cannot be away from my parents for even just a sleepover. My parents prepare my meds, and set me up with special equipment, such as braces, and pillows so



I can sleep at night. This means that camp was the first time in a very long time that I have been away from my parents. At camp, I was told it was okay to ask for help when I needed it. I cannot express how grateful I am to the staff at Roundup River Ranch.

When I grow up, I want to be a marine veterinarian and hope to one day run my own rescue hospital. My body is not going to prevent me from achieving my dreams. I will take the lessons I learned at Roundup River Ranch and apply them throughout my whole life.

A REMARKABLE THING HAPPENS HERE. VOLUNTEERS HAVE AS MANY LIFE-CHANGING MOMENTS AS OUR CAMPERS.

JEFF, Volunteer



Hello! I was born in Rwanda and lived in Tanzania before coming to Denver as a refugee in 2010. I'm currently studying social work at Chadron State College. I have a brother with a serious illness and our family was lucky enough to attend Family Camp at Roundup River Ranch seven years ago. I loved every minute

of it. I've seen how much my brother loves it here. He can be himself, he is more independent, and coming to camp means being able to be a kid.

I volunteer here not only to make an impact on campers, but because Roundup River Ranch has had a profound impact on my life – it is part of my family.

One time a camper was on the Challenge Course and half-way up said, "I'm not going to make it." I said, "You got this! Imagine everything that you want is up there. I am pretty sure you can do it." I motivated him and he climbed all the way up. He came down and said, "I did it!" That was really heart-touching for me.

Every time I come here it changes me. For me to be able to be around so much positivity for a whole week is the greatest thing ever. I take that into the world.

MEENA, Medical Volunteer



Hi! I'm from Houston, Texas and I am a pediatric dermatologist. I've been a medical volunteer at Roundup River Ranch for several years.

One of my favorite volunteer memories is of a boy who had epidermolysis bullosa, a skin condition where even a slight amount of friction can be very painful and restrictive. This camper really wanted to try the zipline. So they put him in the harness and got him to the top, but he is afraid of heights and just couldn't bring himself to do the

zipline. He was really disappointed in himself. So, early the next morning everyone encouraged him to try again. And he did it! I will never forget the look on his face. He was exhilarated and said, "I want to do that again!"

That was the moment that allowed his family to believe he could do more things. Because of that experience, he has now gone on to ski, ride in the Colorado Courage Classic, and more.

I don't always have medicine to heal the patient's body, but I have camp to heal their souls.

When I go back to the hospital after volunteering, I am more compassionate and understanding. Camp makes me a better physician.



Here, is where the goodness in people shines, kindness abounds, and friendships are forged. Volunteers and campers form an unbreakable bond that can only happen in a place like Roundup River Ranch.



26,381

Total Volunteer Hours

Our volunteers gave their time, love, and talent, valued at over **\$884,000.***

1,215 Total Number of Volunteers

- 738 Group or Day
- 116 Medical
- 177 Cabin
- 90 Program
- 23 Photographers
- 25 Kitchen
- 41 Special Event
- 5 Facilities

*Based on the Independent Sector's average value of a volunteer hour in Colorado and accepted average medical wage rates for the state.

HERE, YOU NEVER FEEL ALONE. BECAUSE FAMILY CAMP IS WHERE YOU FIND YOUR TRIBE.

80% of families saw their child with a diagnosis do/accomplish something at Family Camp that prior to coming to Roundup River Ranch they did not think they'd be able to do.

99% of families increased their social network by connecting with someone on a similar life journey.

86% of caregivers reported that they were able to relax at camp, which resulted in their child relaxing more as well.

95% of families reported that one or more members of their family feel emotionally closer after the camp experience than prior to coming to Roundup River Ranch.

"This is the only place in the world where we feel safe and surrounded by people that are the same." — Sara, Camper Mom



HEALING IS SERVED HERE.

Each Saturday night, Roundup River Ranch volunteers tuck the little ones into bed and provide an opportunity for teens to get to know each other and share laughs. Meanwhile, adults are encouraged to visit Café au Lait – a unique café with waiters, sweet treats and beverages, a cozy fireplace, and quiet music in the background. Here, often for the first time in ages, parents relax, connect, and share.

Families bond and rally for each other here emotionally and physically. One year, a mother may be surrounded by others who listen intently, nod understandingly, and lay a loving hand on her shoulder. The next year, that same tearful mother provides strength and encouragement to others. Café au Lait serves up the magic of love, laughter, hope, healing, and the power of community.



Sometimes it's about sharing resources, other times it's simply sitting together with a cup of coffee knowing that those around you truly know the challenges of your journey.

HERE, MY DAUGHTER FEELS LIKE SHE BELONGS.

Sara Yelpaala, Mom, Family Camper, Roundup River Ranch Board Member

My daughter Eliana, has a disease called Eosinophilic Esophagitis (EoE) along with dozens of severe food allergies. EoE is a chronic immune condition triggered by a reaction to food that causes an inflammation of the esophagus. She was diagnosed as a one-year-old and our life hasn't been the same since. At the moment, she can eat only sugar, water, amino acid-based formula, and white potatoes.

Eliana is often sick or in pain, has regular medical procedures and doctors' visits, and takes several medications. We attend therapy to work through her frustrations with food and her disease, and have a food therapist to help her learn how to take the volume of formula she needs. We spend hours every day focused on making sure she gets the nutrients she needs to keep healthy. Because of all this, we've had to dismantle our daily life. So many social activities are centered around food, from birthdays to holidays to play dates.

Roundup River Ranch is the first place Eliana met another child with EoE. It's been so great to meet families who understand the anxieties associated with raising a child with severe chronic conditions. Eliana is only four years old, but she's embarrassed to drink her formula in public. At camp, she enjoys her formula with other kids who are drinking the same thing and has been asking kids to see their G-tubes and learn about it as she may need one in the future. EoE is pretty rare and Eliana has a very complicated case, but at Roundup River Ranch, Eliana feels like she belongs.



"At Roundup River Ranch, Eliana met older children with her same disease, so she knows that she can thrive and be anything she wants." – Sara, Camper Mom



IT HAS
BEEN AN
EVENTFUL
YEAR HERE.



308 SILLY SKIERS ON THE SLOPES

3rd Annual Superhero Ski Day

Our campers have superpowers like courage, strength, and hope. In 2019, generous skiers hit the slopes of Vail on March 9th to raise money and build awareness.

Raised: \$67,749 – a 323% increase from 2018!

Top Fundraising Team: Julie Sullivan and Julie's Wonder Woman Posse

Top Fundraiser: Finn Mott

Lead Sponsors: Alpine Bank, Vail Resorts EpicPromise, and Access Unbound

Highlights:

- 64% of attendees were first-time participants.
- 9 adaptive snow sport experiences were provided in partnership with Access Unbound.



346 HAPPY GUESTS IN THE CITY

3rd Annual A Taste Of Camp

On April 26th, we gathered in Denver to celebrate campers at Roundup River Ranch's 3rd annual gala in the city, where campers performed and shared how camp changed their lives.

Raised: \$387,231

Co-Chairs: Sara Yelpaala and Susan Shamos, Megan Holtmeyer and Bev Wagner, Shane Kleinstein and Joanne Kleinstein, Mia Berlin, Alissa Joblon, Risa Silverman, and Debbi Alpert

Lead Sponsors: Wagner Equipment, DaVita, and First Western Trust

Superhero Award Recipients: The Wagner Family

Highlights:

- 82% of guests supported Roundup River Ranch.
- Paul Newman's daughter and SeriousFun Camp Ambassador, Clea Newman-Soderlund, presented the 2019 Superhero Award.



355 GENEROUS FRIENDS IN THE MOUNTAINS

9th Annual A Grateful Harvest

Guests gathered in the heart of camp on August 10th as our campers celebrated "THIS IS ME!" at our 9th annual gala. Renowned local chefs from La Tour Restaurant, Sweet Basil & Mountain Standard Restaurants, Juniper Restaurant, Game Creek Club, and Splendido at the Chateau created exquisite dishes paired with fine wines, and campers entertained with Stage Night performances.

Raised: \$1,239,667

Co-Chairs: Donna Martin and Linda Hendricks

Paul Newman Legacy Society Inductee: The Ferguson Family

Highlights:

- 89% of guests supported Roundup River Ranch.
- 9 camper families attended A Grateful Harvest, each representing a different diagnosis.

"A Grateful Harvest is always a special event for our family. Seeing all the people willing to raise their paddles to help seriously ill children gives me goosebumps all over."

– Amanda, Camper Mom

THE IMPACT OF SUMMER CAMP.

(WHAT HAPPENS HERE, GOES FAR BEYOND THE CAMPFIRES.)

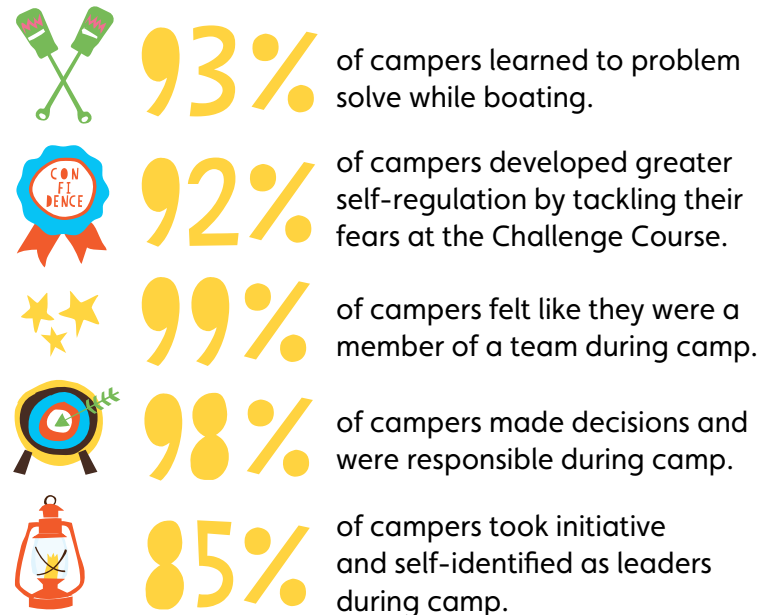
Camp matters. And it matters even more to kids battling serious illnesses who have never met someone “just like them” with identical scars, parallel challenges, and the shared hardship of having to grow up too soon. At Roundup River Ranch we care for the whole child – we are ready to accommodate, anticipate, and respond to any physical ailments, mental illnesses, emotional traumas, or social health issues.

So, what does caring for our campers’ complete well-being look like?

- Nearly 9,000 medications checked, double checked, and administered at a precise time, round-the-clock, by our dedicated nurses – averaging over 23 medications per summer camper.
- Providing an average of 117.5 care hours for each summer camper during their camp experience.
- Making it possible for campers to climb the Challenge Course, ride a horse, aim an arrow, create a stage routine, enjoy mealtimes, and more.
- Creating a nurturing environment with intentional, challenge-by-choice programming, camper-led reflection, and moments of complete unstructured and unbridled joy.



Just look at the impact of Summer Camp in 2019:



WHILE A LOT OF MAGIC HAPPENS HERE, IT'S NOT BY CHANCE.

Last year, Roundup River Ranch announced our Strategic Plan, FY2019-FY2023. Our Strategic Plan places an emphasis on sustainability, as a core tenant of excellence, and growth is always examined through the lens of excellence and sustainability. Roundup River Ranch is proud to report that in 2019 we were in it to win it, giving 110% (two of our favorite guideposts)! Below are updates on our organization's progress:



EXCELLENCE

- Enhanced Astronomy programming with the launch of the new Gates Observatory.
- Expanded our programmatic evaluation by placing a greater focus on social emotional learning skills and development during Summer Camp and supporting whole family health during Family Camp.
- Enhanced campers' year-round well-being and ability to self-advocate through the second year of asthma education (see page 22).
- Increased our offering of play therapy through the efforts of our licensed Behavioral Health Manager. Kids needing extra support were provided individualized play therapy to deescalate emotional frustrations, anxiety, and stress – so campers never missed out on the fun.

SUSTAINABILITY

- Bolstered our capital reserves by nearly 40%.
- Strengthened our medical partnerships with the addition of Medical Roundup reports.
- Offset 26% of our energy costs with on-site solar panels.
- The Board made a strategic decision to retain a consulting firm to invest in Roundup River Ranch's future.
- 100% of our Board Members contributed financially with a goal to cover nearly all overhead costs, so that every additional dollar donated directly impacted campers.

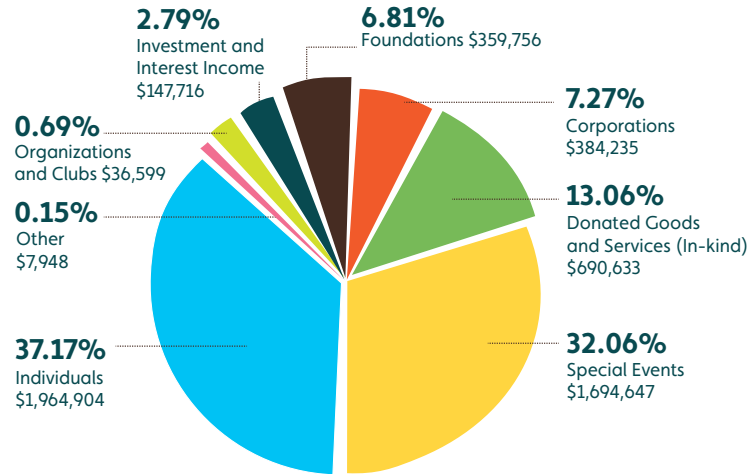
GROWTH

- Evolved our Camper Ambassador programs to all have a dual purpose – professional skill development and the pure joy of peer-to-peer connection.
- Constructed and opened two new yurts for Fine Arts and Nature & Discovery.
- Increased brand awareness in the Denver Metro Area through a variety of media outlets (TV, radio, and print).
- Opened the much anticipated new building, DJ's Junction, that is the home of our staff administrative offices, and includes housing for medical and non-medical volunteers, open program space for campers, and the Gates Observatory and camper classroom.

2019 FINANCIALS

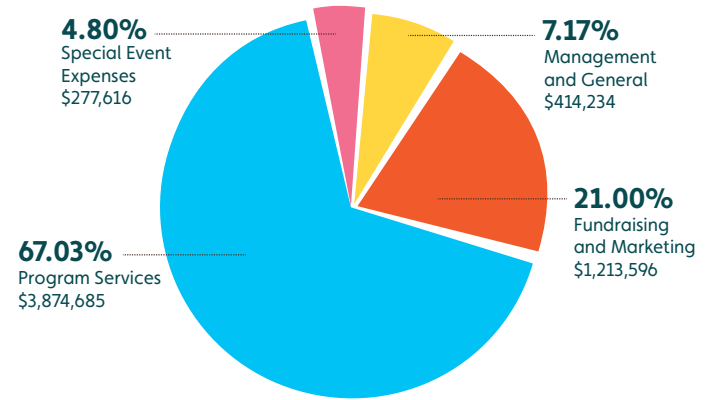
Financial information from November 1, 2018 through October 31, 2019 is based on FY2019 audit.

Revenue



Total Revenue: \$5,286,438

Expenses



Total Expenses:* \$5,780,131

- * Annual fixed asset depreciation (\$718,213) is included in the expense chart.
- Please note: The Board of Directors invested in Roundup River Ranch's future by retaining an outside consulting firm to advise on growth and future strategic decisions. These expenses are included within the Fundraising and Marketing expenditures and will not be annual ongoing expenses. These consulting fees account for approximately 10% of the Fundraising and Marketing expenses.
- Roundup River Ranch's auditors certified that our FY2019 audited financials comply with the Philanthropy Advisory Service of the Council of Better Business Bureau's and American Institute of Philanthropy's standards and that our expense allocations are consistent with best practices in nonprofit management and fundraising. In addition to reviewing financials, organizational transparency, governance, leadership, and program results are important indicators of excellence in nonprofit performance. FY2019 overhead costs include important investments in training, planning, evaluation, and fundraising so we can continue to operate our programs at a high level of excellence.



TOTAL COMMITMENT.

100% of our Board Members contribute financially to Roundup River Ranch, with a goal to cover nearly all overhead costs, so that every additional dollar donated directly impacts campers.



TIME IS MONEY.

Our medical volunteers donated nearly 5,000 hours of medical care to Roundup River Ranch valued at over \$284,000.



PRICELESS EXPERIENCES. ZERO COST.

The majority of Roundup River Ranch camper families have severe financial stress because of their ongoing battle with their child's serious illness. Since camp is free – thanks to generous donors like yourself, we eliminate any barriers for children with serious illnesses to experience the pure joy of childhood.

WANT TO KNOW WHAT A DAY IS LIKE HERE? HERE'S A DAY IN THE LIFE OF OUR CAMPERS:

7:30 a.m.

Early Elk

Early risers start the day with optional camp activities from yoga to fishing. Hello, Sunshine!

8:15 a.m.

Best Day Ever

Each morning, a bead is introduced that represents community, compassion, or courage, and that becomes the thought of the day.

8:30 a.m.

Mmmmm Breakfast

Camp breakfast is often served with a side of bacon and an extra side of dancing!

10:30 a.m.

All Kinds of Activities

Campers rotate through two activity blocks, enjoying Art, the Challenge Course, Drama, Fishing, Boating, Nature & Discovery, Music, the Equestrian Program, and more.

5:00 p.m.

Ahhh. Cabin Time

Time together for sharing stories, playing games, and enjoying new cabinmates that become life-long friends.

2:45 p.m.

More Activities!

From activity areas to all camp programs like Silly Olympics, imagine messy, silly, happy festivities.

1:30 p.m.

Feet Off the Floor Time

Camp fun can be tiring! An afternoon rest helps campers recharge for a great afternoon.

12:30 p.m.

Everybody Loves Lunch!

Campers groove for their food, refuel, share stories, and join in lots of group singing.

5:30 p.m.

Slurp. Slurp. Dinner!

No-Hands Spaghetti Dinner is a camp favorite, and utensils are often optional at other dinners. After dinner? Dancing! P.S. sometimes campers eat dessert first!

7:15 p.m.

Evening Activity

Cabin Night, Stage Night, campfire s'mores, and more opportunities for fun and friendship as the stars come out.

8:15 p.m.

Candle Chat

This is a unique opportunity to stargaze, share, and reflect, helping campers recognize their strengths and discover what they share with others.

10:00 p.m.

Lights Out

Bedtime! Sweet dreams and lots of rest to prepare for another magical camp day.

HERE, WE TACKLE ASTHMA FROM A DIFFERENT ANGLE.

We have long believed educational camp programming addressing asthma management could effectively decrease an asthmatic child's need for emergency services and hospital admissions.

So, in 2019, through a partnership with the McKee Wellness Foundation and Banner Health, Roundup River Ranch provided asthma education during its Summer Camp session for kids with moderate to severe asthma and lung disease. By tracking the effects of education on campers with asthma who attended camp during the last three years we have found:*



A 95% reduction in ER, urgent care, provider and inpatient hospitalizations.



A 96% reduction in missed school days.

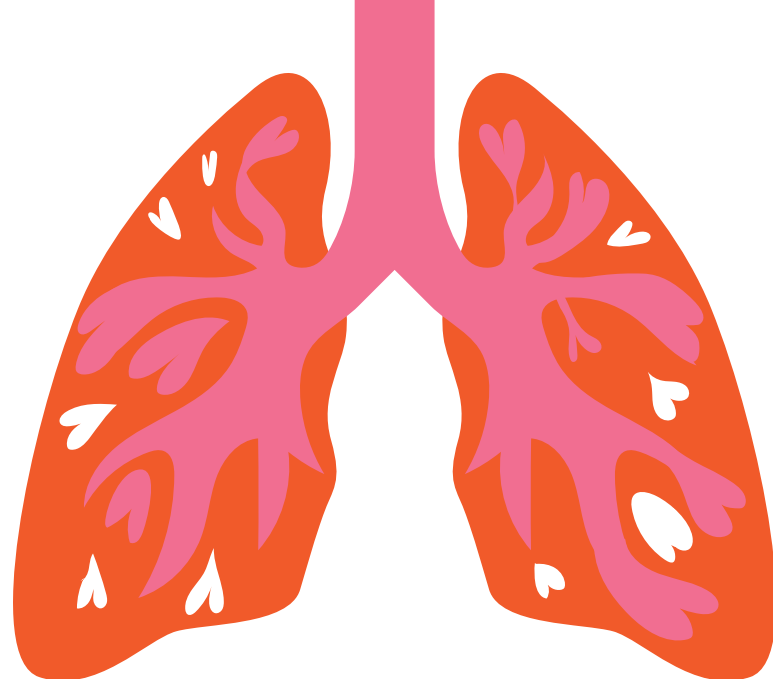


A health care cost savings of approximately \$55,000.**

The data shows that with the utilization of asthma education, patients had improved clinical outcomes measured by fewer urgent care visits, emergency department visits, and reduced hospital admissions.

In addition, data showed improvement in campers' comfort in sharing their medical condition, taking medication around others, and knowing what to do when they are having asthma symptoms.

Roundup River Ranch is committed to continuing to provide old-fashioned camp fun with vital asthma education woven into our activities.



"Summer Camp experiences where children are engaged in learning about their asthma improves how a child self manages their condition. They become more comfortable in medicating and find they can participate in life as fully as anyone else, so long as they manage their care."

– Dr. Mark Brown, Medical Director, Respiratory Care, Associate Director, Breathing Institute; Children's Hospital Colorado and Roundup River Ranch Medical Advisory Committee member

* "Internal Retrospective" study using clinically relevant data available in historical medical records from 2016, 2017 pre and post ALA Champ camp and 2017, 2018 pre and post Roundup River Ranch camp.

** Represents annual cumulative costs for Northern Colorado Roundup River Ranch campers.

THEIR IMPACT AND THEIR BIG-HEARTED SPIRITS WILL ALWAYS BE HERE.

Ron Maclachlan

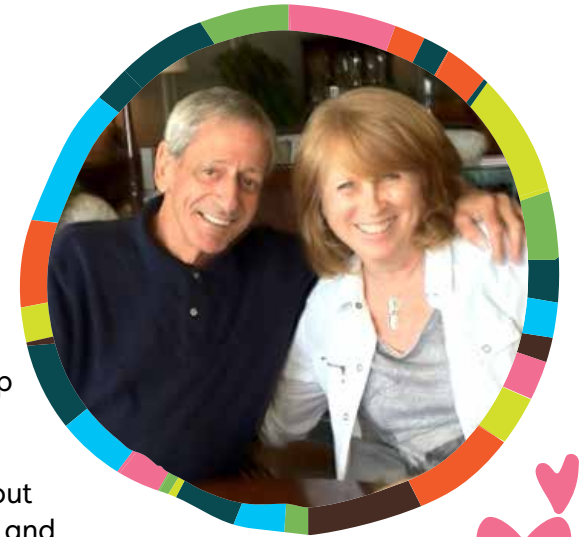
Ron served as a passionate and dedicated board member of Roundup River Ranch since 2014 and brought a spirit of playfulness and humor, combined with strategic thinking and ethical business acumen, to our organization and board. Ron passed away on November 13, 2019, and he will be forever missed at Roundup River Ranch. Ron's involvement began several years before he joined the board thanks to a friendship with Bob Forrester (recent CEO and Chairman of Newman's Own Foundation) and his wife Linda. That connection led Ron and his wife, Joan (who remains a devoted board member), to visit Double H Ranch, our sister camp in upstate New York. Ron said, "There, we saw Paul Newman's unbounded love and commitment for helping children. And after attending the first 'think tank' at the Brown Palace announcing the effort to establish a Colorado camp, we were hooked!" Ron's big heart, sense of humor, and

commitment to supporting children will live on in the smiles and joy that he has made possible at camp.



David Stern

David and Liz Stern are deeply engrained in the fabric of Roundup River Ranch as Liz has made countless quilts that are hung throughout the walls around camp and she has served on the board of Roundup River Ranch since 2017. Together, the Sterns have volunteered and supported camp since it was just an idea back in 2006. David Stern passed away on June 29, 2019, and we will never forget his sense of humor or his passion for serving our community through his efforts with Vail Veterans, Shaw Cancer Center, and Roundup River Ranch. David checked off one of his bucket list items with Roundup River Ranch a few years back, when he won a "Fighter Pilot for a Day" experience at A Grateful Harvest and celebrated his sense of adventure. As David navigated his own health battles, he was so inspired by our campers and their spirit of hope. His legacy will continue to soar as campers take on their own adventures and keep reaching for the stars.



"Ron's enthusiasm for the impact Roundup River Ranch has on its campers and their families was contagious and heartfelt. He will forever be a part of the Roundup River Ranch community." – Ruth B. Johnson, *President & CEO, Roundup River Ranch*

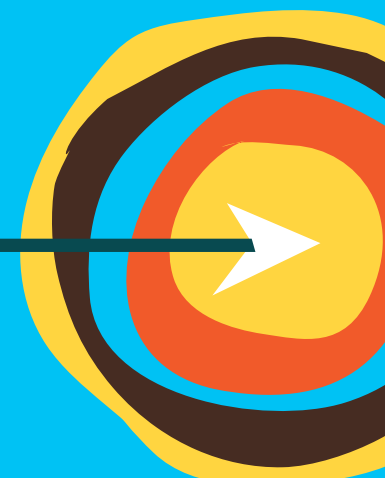


95%

of campers increased
their resilience.



OUR 10TH SUMMER OF CAMPERS IS A PERFECT TIME TO REFLECT, CELEBRATE, AND LOOK FORWARD.



2006

2008

2010

2011

2012

2014

2016

2018

2020

Where We Were

Roundup River Ranch was founded.

On the road, campers went to other operational SeriousFun camps throughout the United States, 2007-2010.

Accepted as a full member of SeriousFun Children's Network, 2012.

Acquired the Farm, increasing the available space for programming to 125 acres, 2015.

Welcomed our first campers to the ranch, July 6, 2011.

2019

Provided over 9,000 camper experiences since opening our doors.

Offered six Summer Camps, eight Family Camps, four Camper Reunions and a Camper Ambassador Program completely free of charge to participants.

Continued to support the whole child with well-trained, experienced camp leaders, and the expertise of a licensed professional counselor who served as a seasonal Behavioral Health Manager.

Engaged over 1,200 volunteers in service including world-renowned medical professionals.


Where We Are

Where We Are Going

On our way to serving our tenth summer of campers at Roundup River Ranch!

Expanding illnesses served with the addition of Weight Related Medical Conditions (Lipid Disorders, Type 2 Diabetes, Fatty Liver Disease, Metabolic Syndrome) during a Family Camp.





OUR 2020 CAMP THEME EMBODIES ALL THE THINGS WE LOVE MOST ABOUT ROUNDUP RIVER RANCH.

As we head into our **TENTH** camp season we are so excited about where we are and what's to come. Our 2020 camp theme is all about celebrating everything that takes place at camp and inviting every camper, family, and supporter to join in the fun. Ready? Set?

HERE WE GO! is full of positive energy and is inclusive in the most camper-esqe way. Because at Roundup River Ranch, everyone is included when someone yells, "Here we go!" No one is left out of what makes Roundup River Ranch so magical and awe inspiring.



This symbolizes the welcoming, everyone-can-do-it nature of all things camp.

Here We Go!

The logo for Roundup River Ranch, featuring a campfire and two figures, with the text "ROUNDUP RIVER RANCH" and "a serriousfun camp" below it.

This is about the power of this magical place, with all its Colorado vibes, camper joy, and natural beauty.



That's what we do here! We are always helping campers go to new heights, go beyond their comfort zone, and go to their happiest of places with newfound friends. Plus, we are forward-thinking and always planning where to go in the future to bring more kids to camp and make experiences even more meaningful.



READY TO HELP US GO BOLDLY INTO THE NEXT DECADE OF CAMP SEASONS? HERE WE GO!



HERE, JOY ISN'T JUST A FEELING – IT'S A MOVEMENT!

EMBRACE JOY Movement

What's the EMBRACE JOY movement? It's where camp and community come together to create exciting ways to support our campers. It's thinking outside the "write a check" box and coming up with fun ideas of how to make a world of difference to kids with serious illnesses.

How can you Embrace Joy and join in the movement?

CELEBRATE YOU

Create a fundraiser for your birthday, wedding, or any other personal accomplishment. Your friends and family will love honoring you in such a meaningful way.



HOST AN EVENT

If it's your party – you can do what you want to. So, think big, small, or somewhere in between. Host a yoga class, put on a bingo night, how about a masquerade ball? By making proceeds or donations from your event go to Roundup River Ranch, guests will feel doubly awesome about attending.



TAKE A HIKE

Whether you feel like climbing a mountain or running that half marathon, fundraise for your next physical feat. Or, come up with your own activity – what about a dance marathon? No matter how you get your heart rate up, raising funds and awareness for Roundup River Ranch will touch the hearts of every one of our campers.



Visit RoundupRiverRanch.org/EmbraceJoy to start your own fundraiser.

A graphic of a blue and yellow spotlight beam shining from the top left towards the center. The text 'OUR CORPORATE SPOTLIGHTS' is written in yellow capital letters inside the beam.

OUR CORPORATE SPOTLIGHTS

Thank you to Vail Resorts EpicPromise, Holland & Hart, and the Shaw Foundation for your continued belief and support in the mission of Roundup River Ranch.



OUR COMMUNITY. OUR MOUNTAINS. OUR FUTURE.

Vail Resorts EpicPromise is how the company embodies its foundational value, “Do Good.” Vail Resorts is built upon the promise of bringing together the mountains, employees and guests to ignite a passion for the outdoors, conserve the natural environment and support local communities for a bright, sustainable future. Vail Resorts EpicPromise has been a big-hearted supporter of Roundup River Ranch for many years from sponsorship, to prize donations, to providing an exceptional chef to create a donated course at A Grateful Harvest. Vail Resorts EpicPromise is an epic partner to all our campers.



At Holland & Hart law firm in Denver, community is built into their values. They acknowledge a special obligation to our communities, and actively seek and undertake opportunities for giving their skills, time, and talents to pro bono and public service activities. The firm, its attorneys and its foundation have generously provided invaluable free legal services to Roundup River Ranch for more than a decade. In addition, Holland & Hart has partnered with us through event sponsorships at A Taste of Camp each year. We are so very grateful for their continuing investment in the children and families we serve.







The Harold W. and Mary Louise Shaw Foundation has been a pillar of philanthropy throughout the Vail Valley and beyond for the last two decades. Mary Louise and Harold Shaw helped build Shaw Regional Cancer Center in Edwards. Further, the Foundation has also been instrumental in supporting Roundup River Ranch’s oncology Summer and Family Camps. The Foundation’s focus on health and particularly supporting children who have suffered the devastating impacts of cancer, has brought respite, joy, and healing to the entire family through free camp experiences.

OUR MEDICAL PARTNERS AND ADVISORS

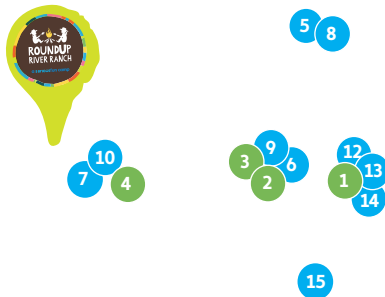
We are proud to recognize our outstanding medical community. They recruit children living with serious illnesses and their families who could benefit from the healing power of camp. Thanks to their steadfast volunteerism, generous financial support, big-hearted in-kind donations, and enduring commitment to medical advisement, our campers get to experience the joys of childhood.

Hospital Partners

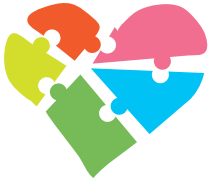
- 1  **Children's Hospital Colorado**
Founding Medical Partner
 - 3,630 on-site volunteer hours donated in 2019.
- 2  **National Jewish Health**
Science Transforming Life[®]
Medical partner since 2009
 - 32 on-site volunteer hours donated in 2019.
- 3  **Rocky Mountain Hospital for Children**
At Presbyterian/St. Luke's Hospital
Medical partner since 2011
 - 318 on-site volunteer hours donated in 2019.
- 4  **VAIL HEALTH**
Medical partner since 2007
 - 86 on-site volunteer hours donated in 2019.

Medical Support Partners & Advisors

- 5 Banner Health
- 6 DaVita
- 7 Eagle County Paramedic Services
- 8 McKee Wellness Foundation
- 9 Medical Solutions
- 10 Starting Hearts
- 11 Texas Tech Health Sciences Center School of Nursing Program
- 12 University of Colorado Anschutz- Pediatric Residency Program
- 13 University of Colorado Anschutz – Pediatric Fellowship Programs: Cardiology, Gastrointestinal, Infectious Diseases, and Oncology/ Hematology
- 14 UC Anschutz/Denver College of Nursing – Nurse Practitioner program
- 15 University of Colorado at Colorado Springs School of Nursing – Nurse Practitioner program



PUT YOUR HEART AND YOUR GENEROSITY RIGHT HERE.



There are so many ways you can help children with serious illnesses and their families. Choose the way that is most meaningful to you.

LEAVE A LEGACY

By including a bequest to Roundup River Ranch in your will or living trust, you are ensuring that we can continue our mission for years to come.

MONTHLY GIVING

When you give every month, it means we can make a huge, ongoing difference for our campers. Join a community of monthly givers and keep your impact strong year-round.

WORKPLACE GIVING

Many employers sponsor matching gift programs to match charitable contributions made by their employees. Use your company's matching gift program and multiply your support for Roundup River Ranch.

GIFTS OF STOCK

Gifts of stock may offer tax advantages. The fair market value of your stock is tax deductible to you, upon transfer, in the year it is donated – and we can use the full amount of the donation to send children with life-threatening illnesses to camp. To donate stock, please consult your tax advisor and notify Roundup River Ranch.

DONOR-ADVISED FUND (DAF)

A donor-advised fund, or DAF, is a personal charitable vehicle that you can establish at a public charity such as a community foundation or financial institution. A DAF allows you to make a charitable contribution, receive an immediate income tax deduction, and recommend grants from the fund over time to qualified nonprofits, such as Roundup River Ranch.

MAKE US YOUR AMAZONSMILE CHARITY

Select Roundup River Ranch as your designated charity on AmazonSmile and their Foundation donates 0.5% of all purchases made through their website directly to Roundup River Ranch.

LOOKING FOR AN EXTRA REASON TO GIVE?

- **Colorado Child Care Contribution Tax Credit** - Colorado taxpayers who make gifts to Roundup River Ranch may be eligible to receive 50% tax credit. Maximize your giving while reducing the after-tax cost of your gift!
- **Charitable IRA Rollover** - Individuals aged 70.5 and older can contribute up to \$100,000 from their Individual Retirement Accounts directly to Roundup River Ranch without recognizing the assets transferred as income.

LEADERSHIP

Board of Directors

Chair

Cathie Bennett, JD

Immediate Past Chair

Julie Sullivan, JD

Vice Chairs

Bob Shafer

Matt Teeters

Directors

Tim Beyer, JD

Jan Burrow

David M. Cohen, MD

Steven A. Cohen, JD

Kathy Cole

Leslie Davies

Regina Fink, RN, PhD

Alissa Gardenswartz, JD

Greer and Jack Gardner, JD

John Gates

Lia Gore, MD

Clyde Hanks

Judy and Bob Holmes, JDs

Dennett Hutchinson, JD

Anthony and Becky Kinney, MD

Shane Kleinstein

Joan MacLachlan

Donna Martin

Stacey Odom*

Steve Pope

Bob Ravenscroft

Debbie and Jim Schultz

Liz Stern

Hugh Sullivan

Beverly and Bruce Wagner

Keith Weisz, MD

Leewood and Tom Woodell

Kristy and Bill Woolfolk

Scott and Joni Wylie

Sara Yelpaala

Ex Officio

John Forester, JD

Ruth B. Johnson, JD

Founder

Alison Knapp

Chair Emerita

Lia Gore, MD

In Memoriam

Gerald Gallegos

Ron MacLachlan

Les Stern

Honorary Chairpersons**

President Gerald R. Ford and

Mrs. Betty Ford

Advisory Board

Chairs

Donna and Patrick Martin

Kristy and Bill Woolfolk

Members

Brenda and Derik Allerton

Marilyn Augur

Pam and Richard Bard

Karen Berndt

William Bishop

Heidi and Mark Bricklin

Stacy and Michael Brown

Doe Browning

Mary and Cliff Buchholz

Glory and Michael Burns

Jeri and Charlie Campisi

Betsy and Dennis Cheroutes

Eileen Clune

Gerri Cohen

Marla and George Coleman

Kelly Liken and Rick Colomitz

Joanne S. Crosby

Ida Daniel

Mary and David Davies

Monique Davis

Susie Davis

Lisa Dennis and Gavin Selway

Kelly and Andrew Duke

Sandi and Leo Dunn

Jane and Reed Eberly

Kathleen and Jack Eck, MD

Paula and David Edwards

Cindy Engles and Stuart Frith

Kathy and David Ferguson

Cathie Bennett and Fred Frailey

Craig Foley

Laurie Galbreath

Suzanne Gallegos

Linda Galvin

Grace and Steve Gamble

Georgia and Donald Gogel

Carla Guarascio

Shelie and Rick Gustafson

Mary and Jim Hagen

Jane E. Hall

Jennifer and Adam Harrison

Jane and Tom Healy

Linda Hendricks

Tracey Dolan and Rick Hermes

Drew Hollenbeck

Kathy and Mike Imperi

Lynn and Don Janklow

Jane and Greg Johnson

Diane Pitt and Mitchell Karlin

Barbara and Tim Kelley

Alison and Kim Knapp

Linda and Mark Kogod

Laine and Merv Lapin

Sandy and Charles Lloyd

Liz Logan and Bill Sterett, MD

Gina and Jim Lorenzen

Gail and Joseph Mahoney

Bobby and Julie Mandell

Donna Meyer

Bob Moroney

Karen and Jim Morter

Stacey and Trey Odom

Sally and Richard O'Loughlin

Lisa and Dave Pease

Suzi and Donald Perozzi

Pam and Ben Peterzell

Cricket and Rick Pylman

Amy and James Regan

Rebecca Riff

Anne Roberts

T. Denny Sanford

Suzanne and Bernard Scharf

Carole and Peter Segal

Lynn and Ken Siegel

Lisa Siegert-Free and Nate Free

Beth and Rod Slifer

Marilyn and Jim Steane

Brook and Martin E. Jr. Stein

Susan and Tom Washing

Carole A. Watters

Karin and Bob Weber

Nancy and Don Wiese

Kim and Steve Winesett

Nancy and Harold Zirkin

Medical Advisory Committee

Chairs

Keith Weisz, MD

Adel Younoszai, MD

Members

Alison DuMond, CPNP-AC

Lalit Bajaj, MD

Mindy Banks, MD

Emily Barr, CPNP, CNM

Terri Bisio, RN, NP

Marita Bledsoe, MD

Anna Brouwer, RN

Mark Brown, MD

Michele Chetham, MD

David M. Cohen, MD

Patrick Cripe, MD

Jeffrey Darst, MD

Edwin DeZoeten, MD

Laura Dorneman, RN

Wendi Drummond, DO

Regina Fink, RN, PhD

Monique Germone, PhD

Elizabeth Gibson, PNP

Jens Goebel, MD

Lia Gore, MD

Michael Handler, MD

Katie Hannigan, RN, BSN

Beth Hasse, RN, BSN

Molly Hemenway, RN, PNP

Karen Hill, RN, PNP

Edward Hoffenberg, MD

Meena Julapalli, MD

Sarah Kelly, PsyD

Jill Keyes, MD

Kelly Knupp, MD

Juliane H. Lee, MD

Deborah Liptzin, MD

Arthur Liu, MD

Edward Liu, MD

Kelly Maloney, MD

Dennis Matthews, MD

Lisa Meltzer, PhD

Jerrold Milton, RPh

Michael Narkewicz, MD

Rachelle Nuss, MD

Carla Oliver, MSW, CCLS

Suzanne Paul, FNP

Nathan Rabinovitch, MD

Bridget Raleigh, NP



Bethany Rippe, CCLS
Adam Rosenberg, MD
Benjamin Ross, MD
Scott Sagel, MD
Ronald Sokol, MD
Elizabeth Solan, MD
Chelsey Stillman, PA-C
Shikha Sundaram, MD
Julie Zimbelman, MD

STAFF

President & CEO

Ruth B. Johnson, JD

Staff

Dakota Anderson
Grace Anshutz
Donna Arnold
Marita Bledsoe, MD
Sarah Braucht
Samantha Busenhart, JD
Charlie Cherrington
Jennifer Clark
Carly Clements, LPN
Taylre Derby
Jenika Doberstein
Ben DuBois
Martin Dunning
Cathy Ethington
Craig Hollowell, Jr.
Katherine L. Hannigan, RN
Stephanie Hearn
Mason Klahn
Sterling Nell Leija
Mitzi Marquez, MBA
Victoria Mueller
Ryan Pendergast
Kendra Perkins
Katherine Ruark

Katie Santambrogio, MNM
Dakotah Stoneking
Chris Troxell
Kali Vansteel
Carly West
Emma Whiting

Hospital Partners

Founding Hospital Partner

Children's Hospital Colorado

Hospital Partners

National Jewish Health
Rocky Mountain Hospital for
Children P/S/L
Vail Health

Medical Support Partners & Advisors

Banner Health
DaVita
Eagle County Paramedic Services
McKee Wellness Foundation
Medical Solutions
Starting Hearts
Texas Tech Health Sciences
Center School of Nursing
Program
University of Colorado Anschutz-
Pediatric Residency Program
University of Colorado Anschutz-
Pediatric Fellowship Programs:
Cardiology, Gastrointestinal,
Infectious Diseases, and
Oncology / Hematology
UC Anschutz/Denver College
of Nursing - Nurse Practitioner
program
University of Colorado at
Colorado Springs School of
Nursing - Nurse Practitioner
program

* Indicates a board member who served during FY2019 and who has since transitioned off the Board.

** In Memoriam



THE
**CAMPFIRE
SOCIETIES**

THANK YOU! FROM THE TOP OF THE ZIPLINE TO THE DEPTHS OF NEW FRIENDSHIPS, YOU HAVE CHANGED SO MANY LIVES.

The Campfire Societies of Roundup River Ranch are made up of special donors who have made extraordinary financial commitments to support and strengthen our organization and the communities we serve. The following donors made a gift between November 1, 2018, and October 31, 2019. *An asterisk * indicates someone who is deceased.*

Circle of Hope

\$499,999 to \$100,000

Abercrombie & Fitch
Kathy Cole
The Ferguson Family
The Frechette Family Foundation
John Gates
The Green Foundation
The Jazzbird Foundation
Donna and Patrick Martin
Janet Mordecai
T. Denny Sanford
SeriousFun Children's Network, Inc.
Wagner Equipment
Bev and Bruce Wagner



Circle of Friendship

\$49,999 to \$10,000

Debbi and Lee Alpert
Alpine Bank
Anonymous
Catherine Bennett and Fred Trailey
Tim Beyer and Jayne Palu
Roy L. Bliss and Toni Bliss Family Foundation
Molly and Ernest Braxton, MD
Richard Bross
Janis Burrow
The Children's Hospital Association Colorado
David Cohen, MD
Marla and George Coleman
CordilleraCares and the Cordillera Hike & Dine
David and Maureen Cross
Cynthia K. Engles Advised Fund of the Dallas Foundation
D.H.W. Energy, Inc.
Mary and David Davies
DaVita
Ora and Dominic De Maria
Lisa Dennis and Gavin Selway
Sandra and Leo Dunn
Regina and Kyle Fink, MD
First Western Trust
Craig Foley

Foundation for Greater Good
The Gallegos Corporation
Grace and Steve Gamble
Greer and Jack Gardner, JD
Tom Gilbertson
Giuriceo Family
Linda Graef Jones
Carla Guarascio
Lia Gore, MD and Frank Haluska, MD
Harold W. and Mary Louise Shaw Foundation
Suzanne and Lawrence Hess
Cathy and Graham Hollis
David and Francie Horvitz
Pam and Mike Howell
Alissa and Matt Joblon
Susan and Rich Jones
The Kettering Family Foundation
Rebecca Kinney, MD and Anthony Kinney
Knapp Mandell Family
Linda and Mark Kogod
Kroenke Sports Holdings
Julie and Dan Leever
LibertyGives Foundation
Gina and Jim Lorenzen
Joan and Ron' Maclachlan
Gail and Joseph Mahoney
Luleta and Samuel Maslak
Freda Maytag Crawford Trust
Tricia and Patrick McConathy
McKee Wellness Foundation
MDC/Richmond American Homes Foundation
Medical Solutions, LLC
Mellam Family Foundation
The Mitchell Family Charitable Fund
Carol and Larry Mizel
Stacey and Trey Odom

Penny and Christopher Oliver, MD
The Peternell Family Foundation
Zondra Pluss
Amy and James Regan
Rocky Mountain Health Foundation
Sue and Mike Rushmore
Saldanha Family Foundation Inc.
Schlessman Family Foundation
Cyndie and Russ Schmeiser
Debbie and Jim Schultz
Kathie and Bob Shafer
Mary Lynn and Warren Staley
Elizabeth and David Stern
Susan and Donald Sturm
Takeda Pharmaceutical Company Limited
Tappan Foundation
Carole A. Watters Fund of Communities Foundation of Texas
Holly and John Williams
The Winston Howard Fund of the Denver Foundation
The Woodell Family Foundation
Nancy and Harold Zirkin
Jarona and William Stevens
Sara and KP Yelapaala

Circle of Laughter

\$9,999 - \$5,000

Nedda and Ken Altschuld
Samantha and Scott Anshutz
Anonymous
Julie and William Bachman
Susan Ballard
The Benevity Community Impact Fund
Karen Benner
William S. Bennett
Bessemer Trust Company
BluSky Restoration Contractors, Inc.
Cathy and Michael Boro
The Bowlmor
Suzanne Bross
The Keith and Carol Brown Family Foundation
Susan C. Buck Foundation
Fund of Gulf Coast Community Foundation
Jennifer and Frank Callahan
Susan and Van Campbell
Marita and Stanley Clifford
Eileen Clune, MBA
Wendy and Steven Cohen, JD
Monica Courville
Carolyn and Byron Craig
Nancy and Andrew Cruce
Susan and Ed Cudahy
Robert Dart
Leslie and Garret Davies
Lisa Dillon
Dorset Charitable Trust
John G. Duncan Charitable Trust
Mike Evans
Cindy and Steve Farber
Kaye Ferry
Judy M. Foley
John Forester
Susan and Richard Frank

Betty and Lin Grubbs
Hala Charitable Foundation
Rebeca and Daniel Harrahan
Harmes C. Fishback Foundation Trust
HBB Foundation
Daphne Hearn
Holland & Hart, LLP
Judy Holmes, JD and Bob Holmes, JD
K & E Jones Family Trust
Kathleen and Elliott Jones
Gloria and Frank Kalman
James Keck
The Suzanne M. Kemmerer Giving Fund
Molly and Taylor Kirkpatrick
Robyn and Andrew Levy
Live Large Love Loud
Devinder Mangat, MD
Alexandra and Ron Mastriana
Karen and John Maxwell
Mile High United Way
Pam and Michael Mycoskie
Suzanne and Norman Myers
Myhren Family Donor Advised Fund
Sally and Richard O'Loughlin
The Andrew M. Paul Family Foundation
Peak 1 Express
Christopher Rebach
Maxine Roberts
Betty and Walt Sanders
Suzanne and Bernard Scharf
Harry L. And Eleanor A. Schick
Philanthropic Fund of the Jewish Communal Fund
Carole and Peter Segal
Susan and Jeremy Shamos
Rheta and Rod Simmons
Iris and Michael Smith
Galen and Ada Belle
Spencer Foundation



Circle of Discovery

\$99,999 - \$50,000

The Anschutz Foundation
Driving For Kids
Jim and Mary Hagen
Julie and Hugh Sullivan



Our goal is to be as accurate as possible in our reporting. Please contact Database Administrator, Dakota Stoneking, at 970.524.5763 or dstoneking@roundupriverranch.org if you notice an error or if you need to update your donor record.

Marilyn and Jim Steane
Summit Investors, LLC
Vail Valley Surgery Center, LLC
Valbruna
Walmart
Karen and Scott White
Nancy and Don Wiese
Kristy and William Woolfolk
Vail Health
Lois and John Van Deusen



Circle of Smiles

\$4,999 to \$1,000

The Abbott Family
Mia and Jeremy Abelson
James C. Allen Charitable
Foundation
Amanda and Jonathan Alpert
Anonymous
Suzi and Tom Apple
Aleasa and Scott Armstrong
Maya at The Westin Riverfront
Resort & Spa
Stephanie Balkovec
Bank of America Charitable
Gift Fund
Allison and Douglas Barker
Johanna and Robert Barrows
Bates Family Foundation
Susan and Lee Berk
Louis and Sandra Berkman
Foundation
Kerrin and Peter Bermont
Cathleen and William Bethke
Adi Slifer Biegler and Alex
Biegler
William Bishop
Ellen Bleznak Wiss
Philanthropic Fund
Vicki and C. Bourret
Eleanor and M.A. Bramante
Mark Brammer
Stromberg Carlson
Alison Brent
Stephen Brooks
Joel Brown and Laura Medina
Family Foundation

Bryan Cave Leighton
Paisner, LLP
Robin and Thomas Burch
Nikki and Derek Cady
Jeri and Charlie Campisi
Castaways Foundation
Cherry Creek Club
Children's Hospital Colorado
Foundation
Christy Sports
Victoria and Terrell Clampitt
Kathy Langenwaller and
Dick Cleveland
Patti and John Cogswell
The Colorado Health
Foundation
Colorado Tour Line, LLC
Community First Foundation
Megan and Derek Conn
Diana and Roy Conovitz
Sarah and Will Cook
Jay Corr
Cooper Couch
Jerry and Alice Craghead
Adam and Amy Cunningham
Madeline and Jeffrey Darst, MD
Alice and Harvey Davis
Faye and Steve Demby
Doris Dewton
Suzy and Jim Donohue
Trisha and Bob Dudding
Jim and Janet Dulin
Marilyn and John Eisenhard
El Pomar Foundation
Marsha Engel
Engel & Völkers Vail
Sheryl and Robert Engleby
Lynn and Don Janklow
Ann and Sandy Faison
Jordan and David Feiner
Debbie and Donald Felio
FirstBank
Brooke and Matt Flavin
Amanda and Peter Ford
Liz Frailey
Campbell and Alic Frey
Patricia and Arnold Fridland
Christy Fuicelli
Jennifer and Rick Geisman
Gail and Arnie Gelfand
Adrienne and Mike Gibbs
Charlotte and Rob Gillespie
Georgia and Donald Gogel
Shirley Gold
Anna Goldberg
Carla and Doug Goodyear
Meg and Tom Gorrie
Jeanne and Hugh Gottschalk
Lynne and Andy Greene
Nancy Groff

Stephanie Penrose Gross
Tim O. Haas
Hal Barkhouse Fund
Julie and Dean Hall
Sarah and Andrew Halstead
Clyde Hanks
Randy Hardy
Harris Family Fund
Jennifer and Adam Harrison
Caroline and Josiah Hatch
Martha Head
Jim Hendricks
Linda Hendricks
Betsy and Mike Henritze
Lisa and Mark Herota
Patrick Hibler
JoAnn Hickey
Highline Sports & Entertainment
Susan Hill and Eric Noreen
Joan Hillenbrand
Arlene and Barry Hirschfeld
Gordon Hoffman
Inglis Family Fund
Debby and Harry Jasper
Charles and Mary Beth Johns
Jane and Gregory Johnson
Johnson & Johnson
Frances and Vincent Jones
Diane and Andrew Kane
Elise and Adam Kaplan
Kartchner Homes, Inc.
Jennifer and Barton Kellogg
Marilyn and Kim Kenly
Mary and William Kennedy
Colleen and Allen Kirkley
Jared Kleinstein
Joanne and Art Kleinstein
Shane Kleinstein
Gillian Zackham and Roy Korins
KP Family, LLP
KSL Capital Partners, LLC
Donna Lang
Josi and David Larson
Bettan Laughlin
Juliane H. Lee, MD
Dianne C. Leeb
Jolie Lehman
Sharron and Benjamin
Liptzin, MD
Joey and Danny Lirtzman
Terry Sprague and Stephen
Livingston
Sandy and Charles Lloyd
Brian and Candace Loftus
Diane and Lou Loosbrock
Tim Mahoney
Gretchen and Hank Manley
Matthew T. Stevenson
Scholarship Trust

Charles V. McAdam Jr.
Charitable Foundation Inc.
Charles McCarthy
Janet and Gary McDavid
Shirley and William McIntyre
Mack McLain
Tracy Flanigan McVey
Linda and Dennis Meir
Susan Brown Milhoan
John Minzer
Andrea and Troy Modlin
Joe and Mary Moeller
Foundation
Brett Moody
Cindy and Dennis Moran
Eileen and David Morton
Jeanne and Dale Mosier
Annika Mosier
Rita and Rick Mueller
NM Morris Family Foundation
Network for Good
New Horizons Foundation, Inc
Newman's Own Foundation
Danielle and Thomas Nix
Northrop Grumman
Corporation
Northwestern Mutual
Foundation
Victoria O'Connor
Jean and Ray Oglethorpe
Oklahoma City Community
Foundation
Jan and John Oltman
Priscilla O'Neil
Charlie & Mary Beth O'Reilly
Family Foundation
Cindy and Kelley Parker
Dana and Brian Parks
Margit and Marty Patterson
Maggie Pavlik and
John Halloran
Jessica Peace
Shannon and Brandon Peterson
Phi Kappa Tau
Justin Pines
Adam Pogoda Philanthropic
Fund
Shereen and Michael Pollak
Quad Cities Community
Foundation - Deann Thoms
Charitable
RA Nelson
Mary Pat and Keith Rapp
Raymond James Global
Account
Razor's Edge, Inc.
The Reel Family Foundation, Inc
Andrea and Eric Reinhard
Ricki and Dave Rest
Ann and Ross Robbins

Coralie and Bruce Rogers
Sarah and Bill Ross
Beth and John Ryan
Ruth Johnson and Kris Sabel
Jeff Samuelson
Coleen and Zach Sanders
Katie and Mike Santambrogio
Kathleen and Terry Scanlan
David W. Schlendorf
Donna and Bruce Schmeiser
Roger and Chris Schneider
Carole Schragen
Sidney Schultz
Gail Schwinger
Seranum Holdings, Inc.
Genery Booster and
Geoff Shamos
Amanda and Rordan Shane
Shelly and Steve Shanley
Sadie and Ryan Shaughnessy
Risa and Ari Silverman
Dalton Sim
Beth and Rod Slifer
Larry and Dee Smith and Family
Julie and Steven Smith
Susan and Martin Solomon
Martin E. Jr. and Brooke
Stein Fund
Liz Logan and
William Sterett, MD
Barbara and Carter Strauss
Sunrun
The Taft Foundation
Sarah and Matt Teeters
Beverly and Bill Thomas
Tiffany and David Thorne
Jennifer and Paul Timmins
Francine and Herbert Tobin
Town of Gypsum
Town of Vail
Angela and Scott Tucker
Bob and Rosie Tutag
UBS Matching Gifts Program
US Bank
Vail Board of Realtors
Foundation
Vail Dermatology - Bella Derma
PLLC
Vail Valley Cares
Visra Vichit-Vadaken
Gwen and Tim Vogelzang
Taylor Wagner
Lawlor Wakem
Janis and Roger Ward
Carole A. Watters
Valerie Weber
Susan Weinberger
Kristine Weisz, MD and Keith
Weisz, MD
Patrick Welch

West Family Foundation
Western Slopes Materials
The Westport Fund
Kit C. Williams
Windsong Properties, LLC
Kim and Steve Winesett
The Winmax Foundation Inc.
Jan and Dee Wisor
Betty and Michael Wohl
Amy Woodworth
Mark Woudstra
Jason Writer
Lynn and Brian Wylie
William Wynn
Jody and Don Yale
Helen and Allen Yates
Megan and Adel Younoszai, MD
YourCause, LLC Trustee
Rebecca Zaner
Stacy and Randy Zerr
Kathy and Jon Zeschin



Circle of Joy

Gifts up to \$999

Jan and Wayne Abbott
Maya Abramsky
Steven and Dorothy Ackerman
Sandi and Larry Agneberg
Michael Agresti
Agrium US, Inc.
Robert Aguilar
Karen Aho
Rachel Akeson
Margaret Albert
Elizabeth Albright
Brenda Allen
Tom Allen
Alliant National Title Insurance
Barrie and Ryan Alpert
Lieba Alpert
Alpine Builders Hardware/NK
Harper Enterprises, LLC
Alpine Laser Clinic
Alpine Lumber
AmazonSmile Foundation
Beth Anderson

Dakota Anderson
Lynn and Jerry Anderson
Lynne Anderson
Thomas Anderson
Scott Andrews
Anonymous
Grace Ellen Anshutz
Glenda and Larry Antonelli
Tamar Arbeli
Mary and Daniel Armistead
Ann and Donald Armour
Dorinda B. Armstrong
Donna and Mark Arnold
Ethan Arnold
Abby Aronsohn
Christina and Balz Arrigoni
Virginia and Ronald Askw
Kristen Atwood
Rosy Austin
Avon Peak Dental
Cherie and Scott Axelrod
Paula Axelrod
Olivia Bacon
Patricia and James Bain
Amy and Adam Baker
Frank Baker
Patricia and Richard Baker
Susan and Jack Baker
Nathalie and Luis Balbona
Laura Baldi
Brewer Ballard
Jeanne Balvin
Norman Balvin
Charles T. Bantiss
Chris Barbella
Andrew Barish
Pamela and Bob Barker
Joel Barndt
Kent and C. Barnes
Emily Barr, CPNP, CNM and
Mark Barr
Shantelle Bartra
Jennifer Basil
Debbie Bass
Sharlene Baum
Barb and Fred Baumann
Francesca and Edward Beach
Carolyn Bechtel
Joanne and Ronald Beda
Carly Bedard
Kristy Behrens
Lacy Bell
Mark Bellamy
Christy Bemis
Chester Bender
Sue and Tom Bene
Michael Benedict
Amy Ben-Horin
Linda and Bob Benkert
Nancy Berg

Gary Bergman
Mia Berlin
Kim and David Bernstein
Jen Bettenhausen, MD and
Tim Bettenhausen
Martha and William Bevan, MD
Alessandra Biagioni
Jennifer Bianchi
Ms. Marsha Bickler
Dave Bielser
Jan Billhartz
Maxine and Jerry Bizer
Lindsey Blacker
Marianne and Scott Blackett
Deborah and Stephen
Blanchard
Catherine Bledsoe
Marita C. Bledsoe, MD
Patricia Blender
Janelle and Buck Blessing
Carol Blevins
Blitz – Vail
Danielle Block
Judy and James Bloom
Alexandra and John Blue
Joseph Boberschmidt
Tanya and Stephen Boderck
James Bohling
Julie Boitano
David Bollert, MD
Milt Bollman
Deborah Bolon-Feeney
Kim and Jim Bolt
Alex J. Borden
Erin and Bob Boselli
Deborah and Mark Bosler
Barbara Bower
Jeff and Lori Boyer
Grace Bradford
Shannon Bradley
Alison and Jason Brainard
Jennifer and Charles Brammer
Margaret A. Brammer
John Brask
Sarah and Randy Braucht
Susan Breeden
Tanya Brennan
Heidi and Mark Bricklin
Bright Funds Foundation
Bring a Trailer Media, LLC
Margaret Brinkman
Gordon Bronson
Lea Ann Brookens
Anna Brouwer, RN
Lee Brower
Austen and Nathan Brown
Bev Brown
Hilary Brown
Lori and Robert Brown
Mark Brown, MD

Stacy and Michael Brown
Kris Bruce
Lois Bruce
Samantha Brune
Doug Buchanan
Herbert Buchwald
Annette and John Budzak
Buffington Homes of
Arkansas LLC
Dana and Chad Buhr
Carole Bukovich
Patrick Burchett
Judith and Duncan Burdick
Eric Burgund
Dale Burkett
Chris Burruto
Phyllis Bursma
Beth and Matt Busenhart
Nancy and Michael Busenhart
Samantha and Michael
Busenhart
Laurie Butler
Mary Anne Butscher
Kristen and Kevin Byrne
Marta and Mark Cadmus
Gary Cage, MD
Madeline Cahue and
Bradley Krumwiede
Louis and Gail Calamari
Catherine Call
Kathryn Campbell
James Cannava
Michele Cardamone
Elizabeth Carewe
Jim Carey
Wendy and Mike Carey
Adam Carlin
Raymond Carlos
Terry Carmody and Jamie Mott
Nicole and Tyler Carner
Cherri Carpenter
Missi and Tim Carpenter
Patty Carpenter
Mary and Phil Carter
Nicholas Carter
Christine and Brent Case
Richard Castleton
Tina and Keith Cater
CE Kahn Fund
Margie Cebula
Patsy and Pedro Cerisola
Sharon Chadwell
Robin and Rob Chalecki
Emily Chalmers
Lisa Chaple
Julie and Mike Chapman
Danielle Chelette
Rosa Cheney
Betsy and Dennis Cheroutes
Mary Chevitski



Roger Childers
Susanna Chlipala
The Christie Lodge
Melissa Chua
Courtnee Chun
Dreux and Richard Claiden
Comilla Clare
Barbara and Lawrence Clark
Jennifer and Adam Clark
Megan and Adam Claypool
Meridith and Mark Cleaveland
Joshua Clendenin
Sarah Cochran
Jeff Cocking
Christina and Slade Cogswell
Jo Ellen and Steven Cohen
Cathy Cohn
Ann and Les Cole
Christine Cole
Holly and T. D'arcy Cole
James Colley
James Collins
Jennifer Collins
Kristen and Tim Collins
Comora Family Foundation
Mary Catherine Conger
Jessica Conn
ConocoPhillips Matching
Gift Program
Sarah and Chris Cooper
Mary Ellen and Stan Cope
Chaya Coppersmith
Kendra and Jason Cowles
Jessica and Daniel Craig
Creative Roost, Inc.
Deborah Croland
Joanne S. Crosby
Priscilla Cross
Dan Crow
Chris and Beau Cudahy
Russ and Becky Cunningham
Susan Cunningham
Kara and Mike Curran
Lisa and Douglas Currey
Ed Curry
Cheri Curtis
Frank Curtis

CyberGrants, LLC
Lynette Dallas
Ida and Wiley Daniel
Dona Daniels
Stephen Daniels
Ryan Darbonne
Kimmy Darling
Charlene Darrow
Dave Bean Engineering
Tom Davies
Cathy Davis
Jackie and Lou Davis
Susie Davis
Wink Davis
Linda C. Davis-Odiorne
Maria De Filippo
Charlotte and Douglas DeChant
Kyle and James Deighan
Jason Delcamp
Ann and Gary Demanett
Beau Denson
Daniel Dettwiler
John DeWildt
Ryan Dicharry
Dede Dickinson
Georgi and Ryan Dienst
Gail Dietz
Jack Dillon
Lita Dirks
Fred Distelhorst
Christy Dittrick
Patti and Ross Dixon
Arwilda Dockhorn
Rick Dockhorn
Mary and Rodger Dockstader
Rocco and Judi Dodson
Tamra Dollin
Kelley Donegan
Marian and Darrell Donly
Jody L. Donna
Donor Alliance, Inc.
Brian Donovan
Dennis Donovan
Patricia and Lonnie Donovan
Robert and Carolyn Donovan
Family Charitable Fund
Michael Dorfman, MD
Laura and Casey Dorneman
Heather Dorr
Double JGG LLC
Deb and Drex Douglas
Kevin Douglas
Buzz Dow
Grace Dowd
Jill and Slim Dowd
Katie Dowd
Patricia Dowd
Leslie Doyle
Karin and Lon Drollingier
Susan Drumm

Meg and Jamie Duke
Margaret and Cleive Dumas
Pat and Jerry Dunkle
Jennifer and Will Dunn
Marty Dunning
Shellie and Roy Dunning
Hilary and Zack Dunsmoor
Laura Dupre
Dave Bean Engineering
Keara Dwyer
Susan and Harold Eagan
Katherine and Stanley Eaton
Jane and Reed Eberly
The Eckley Family
Charitable Fund
Andrea Eddy
Esther Edelmann
Lauren Edinger
Fielding Edlow
Alex Edwards
Ann Eggers
Heather Ehret Faircloth
Mike Eisenhauer
Karen and Robert Ekman
ElevenPine – 11 Pine, Inc.
Elkay Sales
Nancy Bedlington and
Robert Elkins
Sarah and Sylan Ellefson
Bruce Ely
Deborah Englehart Sanit
Vickie Enloe
Any and Louis Enriquez
Epicurean Group
Dave and Marty Erb
Paul Erwin
Robert Eschenburg
JD Espana
Eternal Life Giving Foundation
Cathy and Joe Ethington
Renee Euler
Jay Evans
Maddie Evans
George Everding
Darren Everett
Candace and Eric Eves
Sue and Stew Eves
Ewing Trucking Construction
Esmarie and Sebastian Faessler
Kathleen Fair
Thomas Falkner
Julie and Brent Farber
Karly and Brad Farber
Nancy and Mike Farley
Connie and John Farnbach
Kristin Fawcett
Monica and Steve Federico
Markian Feduschak
Melyssa Feiler
Mark Fenstermacher

Jean Fiegel
 Linda and Tony Fiest
 Kim and Frank Filicicchia
 Kirsten Fink
 Bob and Phyllis Finlay
 Eleanor Finlay
 Linda and Buzz Finn
 Leslie and Thomas Fiorentino
 Lari and Mark Fischer
 Fisher Contracting
 Gregory Fisher
 John Fisher
 Yvonne Fisher
 Bahareh and James Flavin
 Sharon Fleischer
 Tina Fleishman and
 Frank Johnson
 Julia Fletcher
 Mark Floersch
 Ryan Foor
 Christine Ford
 Judy Ford
 Charles Forester
 Richard Forester
 Marcia Forman
 John Fornarola
 Stan Fortkamp
 Forward Tech Solutions
 Anilee Foster
 Crosby and Sally Foster
 Richard M. Foster and
 Julia T. Waggener
 Foundation Source
 Four Seasons Hotel Denver
 Joan Fowler
 Barbara Frailey
 Daniel Frank
 Shawna and Graham Frank
 Brent Franks
 Molly Frantz
 Campbell and Alice Frey
 Anne Fried
 Deborah Friedman
 Beth and Glenn Frommer
 Alison Fuchs
 Charlene and Mike Fuchs
 Lynn and Graham Fulton
 Molly and Kevin Furtado
 Mikki and Morris Futernick
 Steve Gaal
 Claude Gagne
 Suzanne Gallegos
 Linda Galvin
 Stuart W. Galvin
 Alissa Gardenswartz, JD
 and Craig Gardenswartz
 Faye and Wayne Gardenswartz
 Andrew Gardner
 Deborah and John Gardner
 Steve Gardner



MaryBeth Garel
 June and Ivor Garlick, MD
 Vicky and John Garnsey
 Elisabeth Gart
 John Garvey
 Gary Buck, Inc.
 Laura Lee and George Gastis
 Hannah Geisman
 Maxine Gelfand
 Sarah and Nick Giachino
 Larue R. Gibson Jr. Family
 Charitable Fund
 Anne Gilbert
 James B Gilbert
 Charlotte Gillespie
 Sarah Giovagnoli
 Andrew and Elizabeth Gittle
 Juliet and Daniel Glaser
 Katie and Howard Glasser
 Susan Glasser
 Katherine Glenn
 Leonard Glode

Laurie Goacher
 Stephen Godar
 Alison Goether
 Charles Goforth
 Beth and Martin Gold
 Meagan Gold
 Pamela and Josh Gold
 Alex Goldsmith
 Joyce and Glenn Goldstein
 Kim Gollick
 Brandon Gonski
 Dawn Goode
 James Goodman
 Kara and Hayden Goodrick
 Suzanne and Randy Goodwin
 Niki Gordon
 Susann Gordon
 Kiki Gore
 William Gorman, MD
 Mary Gorski
 Susan Young and Alan Gorsuch

Gabriela and Peter Gottlieb
 Christopher Goulding
 Julien Gradnigo
 Michael Graham
 Johnathan Grande
 Donna Gray
 Jackie Gray
 Greater Horizons
 Anne W. Green
 David A Green
 Fred Green
 Leonard Green
 Harriet and Michael Greenstein
 Brian S. Greffe, MD
 Suzanne Griffin
 Jennifer Griffin
 Eric Grim
 Julie and Fletcher Groff
 Pamela and
 John A. Grossman, MD
 Todd and Karen Grubin
 Cynthia Guarino
 Creath Guillot
 Lucinda Guinn
 Marie Therese Guirgis
 Janet Gurley
 Richard Gutfreund
 Nancy and Mark Hackbarth
 Catherine Gartery
 Kim and Chris Hahn
 Rosalie Hahn
 Nicole Halbe
 Lene Hald
 Debbie Hale
 Joseph Halovanic
 Steve Hanawalt
 Eric Hankinson
 Suzanne Hanks
 Katherine Hannigan, RN
 Nancy and John Hannigan
 Frederick Hansen
 Jean Hanson
 Kathy Hardin
 David Hardt
 Jordan Harrill
 Anne Harris
 Monique Davis
 Margaret Hartley
 Gabrielle Hartsaw
 Hartzell Propeller Inc.
 Jennifer Haskell
 Sheila Hatcher
 Jerry L. Hawks
 Gail and Dennis Hayes
 Amy and Tom Hazelwood
 Julie Headley
 Stephanie Hearn
 Julie Haydon
 James Hegy
 Kevin Heidtbrink

Dave Heiges
 Kirstin and Chris Heinitz
 William Heisel, MD
 Heidi Heisel
 James Heisel
 Jane Heisel
 Jenny Hejtmanek and
 Doug Tremblay
 Sylvia Hellmund
 Kelly Helmes
 Molly Hemenway, RN, PNP
 James Michael Hemsley
 Margaret and Sidney Herman
 Audrey and A. John Hermes
 Jessica Hermsolillo
 Chris Herr
 Scott Herrington
 Julie Herzog
 Robert Herzog
 Brian Heselton
 Kathleen Hesler
 Rachel Hester, BSN, RN
 Angie and Tom Hewitt
 Robin and John Hickenlooper
 Jack G. Hiehle
 Margo and Paul Hields
 Laura and Tom Higashi
 David Higgins
 Mary Highum
 Karen Hill, RN, PNP
 Dora and Jay Hilty
 Brenda and Alan Himelfarb
 Anne Hintz
 Gregory Hoag
 Kimberly Hocott
 Barbara and Rob Hodgkinson
 Tara and Loren Hofer
 Chiqui Hoffman
 Jody Mathie, MD and
 John Hoffman
 Nicole Hoffman
 Claire and Francis Hogarty
 Kevin Holbrook
 Elizabeth Holland
 Sarah Hollander
 Cathy and Graham Hollis
 Amy and Mike Hooley
 Monika Hornbostel
 Douglas Horwich
 Ken and Jan Hostetler
 Scott Houghtaling
 Jabez Howard
 Jeff Howe
 John Howell
 Heather and Kirk Hower
 Linda and John Howitt
 Miroslava Hozzova
 Sarah Hubregsen
 Michelle and Lance Hudson
 George and Judy Hudspeth

Donald Huffner
 Bill Hughes
 Lindsay Humphreys
 Emily Dobkin and Will Hunter
 Cathy Huntsinger
 Karen and Dennett
 Hutchinson, JD
 iLoveKickboxing
 Lisa and Michael Ingelido
 Rick and Sharon Ingersoll
 Sarah Ingersoll and
 Logan Grant
 Judith and Jay Inglis
 Nancy and Bob Inman
 Kristen and Scott Issel
 Kathy and Ron Iverson
 J & C Rodgers Foundation
 Ana and Matt Jablonski
 Donna Jacobs
 Trina and Ethan Jacobs
 Roni Jacobsen
 Pamela and Gary Jagger
 Jill Tipton and Michael Jahraus
 James R. Segreue Living Trust DD
 Katharine and Andrew Janiesch
 Shelly and Christopher Jarnot
 Joanna Jaynes
 Daniel Jend
 Cheryl and Bill Jensen
 Andrew Jent
 Jerry Urban Trustee
 Dave Jeser
 Andrew Johnson
 Charlie Johnson
 Cindy and Richard Johnson
 Helen Johnson
 Jeffrey Johnson
 Kurtis Johnson
 Maureen Johnson
 Sandi Johnson
 Stefanie and Derek Jones
 Natalie Martin and
 J. Terrell Joseph
 Meena Julapalli, MD
 Corey Kadrmas
 Nicole Kaiser
 Richard Kashian
 Andrew Katz
 Kaye Family Foundation
 Brianna Keeton
 Ann Kelly
 Janet A. Kenien
 Margaret Kenney
 Betty Kerman
 Terri Kerr
 Paul Kessenich
 Gina Kessler
 Martha Ketelle
 Jill Keyes, MD
 Karen and Charlie Kilgore

Michelle and Greg Kimble
 Kathy Palakow-Kimmel
 and Neal Kimmel
 Debbie King
 Tara King
 Alyson Kinkade-Russell
 Sandi and Skip Kinsley
 Jane and Michael Kirby
 Lynn Kirchner
 Sheila and John Kitlen
 Mason Klahn
 Thomas Klauer
 Keith Klesner
 Gretchen and Timothy Kneen
 Kristopher Kneen
 Kelly Knight
 Owen Kniss
 Holly Knotowicz
 Jennifer Knowles
 Peter Knox
 Dale Koblenzer
 Kristine Koblenzer
 Rob Koblenzer
 Rebekah Kochavi
 Elaine Kodush
 Tina Koenig
 Suzanne and Peter Koh
 Elizabeth and Michael Kojaiian
 Gregory L. Kontour
 James Koontz
 Greg Kopp
 Sarah Kraemer
 Steven Kramer
 Marilyn Krasusky
 Betsy and Larry McGuire
 Robert Kretvix
 Kroger
 Carol Krueger
 Pavan and Karl Krueger
 Kelly Krumwiede
 Kyle Krumwiede
 Kevin Kuebert
 Sue and Victor Kuklin
 Susan and Bailey Kuklin
 Tanya and Niclas Kullberger
 Benjamin Kurtz
 Irene Ladd
 Donna Lainoff
 Tania Landauer
 Marsha Landesman
 Megan Lane
 Jeannette and Kenneth Lant
 Stanley Lapidos
 Jerry Lapour
 Diane R. Larsen
 Carol and Thomas Lasker
 Parker Lathrop
 Christina and Josh Lautenberg
 Caroline Lavigne
 Sullivan Lawler

Harrel Lawrence
 Alan Laws
 Ethan Lawson
 Margaret Lea
 Constance Leaf
 Paige Lebreche
 Billy Ledbetter
 Elizabeth Leeds
 Matthew Leerberg
 Lego Community Fund
 Andrew Leibowitz
 Sterling Nell Leija
 Neel Lemon
 Dan LeVan
 Meegan Leve and
 Benjamin Ross, MD
 Debra Levitetz
 Harold Lew
 Simon Lew
 Steve Lewis
 Eric Lickteig
 Nancy Lieberman
 Kelly Liekis
 Kate Ligare
 Linda and James Liller
 Erin and Kyle Lindahl



Sheila Linn
 Nancy Lipsky
 Deborah Liptzin, MD
 and Clay Houser
 Namie and Arthur Liu, MD
 Linda Llewellyn
 Stephanie Locke
 Lockheed Martin Employees'
 Political Action Committee
 Erin and Phillip Lockwood
 Steven Loftus
 Joseph Loidolt
 Joseph Loomer and
 Nancy Landes
 Bob Lord
 Kirstie Lovelace
 Ruby and Stephen Loveless
 Michelle and Jonathan Lovins
 Benjamin Lower

Katie and Bill Macfarlane
 Joan and Ron Maclachlan
 Eileen and Doug Macrum
 Margaret Macy
 Colette Madison
 Patrick Mahar, MD
 Katereh Mahobian
 Mark Maldonado
 Jeffrey Malehorn
 Cynthia Maloney
 Kelly Maloney, M.D. and
 Jim Maloney, MD
 Margy and Charles Malott
 Megan Manetas
 Manor Vail Condominium
 Association
 Gloria and Jim Marcelli
 Susan March
 Marchetti & Weaver, LLC
 Jane Marcus
 Rebecca Margulies
 Daniel Markoya
 Mitzi Marquez
 Mary and Reid Marsh
 Ann and John Martin
 Barb Martin
 Robert and Trudy Matarese
 Edreese Maten
 Joseph Mater
 Lee May
 Marci McCalley
 Bill McCammon
 Rebecca McCammon
 Barbara McCarthy
 Stephanie McCarthy
 Dan McCaslin
 Kori McClurg
 Jennifer and George
 McCormick
 James McGill and Bob Ricks
 Foundation
 Barbara and Kenneth McGloin
 Joshua McGraw
 Nicole McGuffin
 Allison McIntyre
 Nancy and Matthew McKenna
 William and Gina McKinney
 Debbie McKitterick
 Annie and Brian McLaughlin
 Frannie McMahon
 Heather and Dennis McMahon
 Ruth A. McMaster
 Caroline McMorrow
 Betty McNeill
 Molly McNerney
 Dan McNutt
 Allison and Thomas McQueen
 Thomas Meacham
 Emily Meagher
 Medical Air Systems, Inc.

Ericka Meier
 Greg Meinke
 Colin Meiring
 Patricia Melero
 Janice and Gerald Meltzer
 Janet Meredith
 Janet Merriman
 Kim and Jason Metcalf
 Elizabeth and Luc Meyer
 Jane Michaels
 Matt Michalski
 Roger Michaud
 Deana and Stephen Michonski
 Mary Lou and Jim Middleton
 Nick Midkiff
 Cynthia and Kurt Mill
 Angie and Mike Miller
 Cathy Miller
 James Miller
 Lois and Jay Miller
 Sarah and Peter Millett
 Monice and Dondrae Mills
 Cornelius Milmoie
 Julia Milzer
 Jane and Richard Mirande
 Lawson W. Mischer
 Linda and Rick Mishkin
 Cynthia and Bryan Mix
 Christy Mock
 Samantha Moeckel
 Lori Moeller
 Kenneth Molzer
 Monte Gifford Design, Inc.
 J. Moon-Murray
 Dennie and Steve Moore
 Sue and Stephen Moore
 Mena Moran
 Patricia and Jeffrey Moran
 John Morrison
 Amy and Michael Moser
 Marka Moser
 Linda Mossman
 Jane Mott
 Pete Mott
 Mountain Berry Culinary
 Victoria and Brett Mueller
 Kelly Mugford
 Michelle Mullins
 Municipal Treatment Equipment,
 Inc.
 Victoria Munoz
 Josephine Munsell
 Robin S. Murchison
 Betsy and Mike Murphy
 Kate and Mark Murphy
 Jenny and Paul Murray
 Beverly and Jon Myers
 Gary Myers
 Rita Myers
 Susan and Paolo Narduzzi

Dana Shepard and
 Michael Narkewicz, MD
 Jean Sullivan and David Nassif
 Jennifer Natale
 Jean Naumann
 Ann and Charles Neal
 Deborah Neisel-Sanders
 Britt Nelson
 Deb and Darrell Nelson
 Elizabeth Neufeld
 Leslie Newell
 Suzette Newman
 Diane and Jim Newsom
 Pat Nicholson
 Ruth Nicholson
 Alissa and Chris Niedz
 Ali Halpern and Joey Nix
 Patty Nixon
 Deirdre and Mark Noble
 Pauline Noble
 Amy and Matt Nofziger
 Charles Nordor
 Vey Nordquist, MD
 Nancy and Mauri Nottingham
 Matthew and Jill Noyes
 Rachelle Nuss, MD and
 Stuart Rosenberg
 Karen and Hans Oberlohr
 Lauri O'Brien
 Reggie O'Brien
 Ian O'Dell
 Sheri and Ron O'Herron
 Renee Okubo
 Austin Olds
 Kurt Olesek
 Lisa and Sean Olson
 Frederick Olthof
 Todd Olthof
 Martine and Shawn O'Neill
 Peter Oppenhuizen
 Joy and Dave Ortiz
 Linda Osterberg
 Robin Ouimette
 Our Town Medical Inc.
 Kathleen Owen
 Tyler Owen
 Lizzy Owens
 Janet and George Oyler
 Alexander Papke
 Alissa and Patrick Pasinski
 Cheryl Patrick and Scott Nelson
 Margot and Robert Patterson
 Patti Design
 Carol Pattison
 Suzanne and Edward Paul
 Brenna and Mike Payne
 Rachel and Jorge Pazmino
 Jen Peacock
 Haley and Michael Pearson
 Lisa and Dave Pease



Amy Peck
 Judy and Tom Pecsok
 Mary Rose and Leonard
 Pelletier
 Kelly Pendergast
 Oliver Pessa
 The Peter-Murray Foundation
 Karen and Robert Peterson
 Vicki and Chris Peterson
 Karen and Jeff Petroff
 Elizabeth and Jay Peyton
 Aaron Phillips
 Greg Phillips
 Picaboo Corp.
 John Picciotto
 Katie and Andy Pickering
 Corie Pierce
 Bo and Erica Pihl
 Danny Pijuan
 Cynthia Pillsbury
 Michelle Pius
 Jennifer and Kyle Pletcher
 Plumb Supply Company
 Katherine Pohl
 Michael Polk
 Mary Jo and Lots Pook
 Andy Poole
 Carolyn and Steve Pope
 Katie and Ryan Portz
 James Power
 Connie and Chuck Powers
 Ruth and Tom Powers
 Derek Prechtl
 Morgan Presley
 Bev and Mark Preston
 Professional Hair Institute
 Melissa Provencher
 Lisa Marie Provo
 Nancy Pruckno
 Steve Psaledakis
 J R Pugh
 Meghan Purdy
 Diane and Todd Purse
 Jeremy Purvis
 Lisa Putnam
 Caroline Pyle
 Kate Radley Ellis

Diana Verrilli and
 David Raduziner
 Leslie Raneri
 Kerri Ratcliffe
 Christopher Ratzlaff
 Jeanette Ray
 Raymond's Office Machines
 and Supplies, Inc.
 Terry and Patrick Reay
 Records – Johnston Family
 Foundation, Inc.
 Kerry Redmond
 Richard Rees
 Carolyn and Brian Reihel
 Reincarnation Auto LLC
 Darren Reinhardt
 Laura and Patrick Reiss
 Emily and Brad Rettig
 Barry Rhonemus
 Susan and Peter Riccardella
 Theresa Richardson
 Jill and Malcolm Ricketts
 Jennie Ridgley
 Nancy and Michael Riebau
 Sally and Robert Rife
 Carol Riggs
 Bethany Rippe, CCLS
 Chandra Rivera
 Roaring Fork Transportation
 Authority
 Robert Howe Title Co of the
 Rockies
 Kelly Roberts
 Whitney Robey
 Mary Roche
 Rocky Mountain Pediatric
 Heart Surgery
 Michael Rodenak
 Betty and Jim Rodgers
 Megan Rodgers, PA-C
 Kathy and William Roe
 Bruce Rogers
 Jeffrey Rogers
 Maria Romano
 M J Roseman
 Barbara and Bob Rosen
 Neil Rosenberger
 Teri A. Ross
 June and Paul Rossetti
 Jill Roth
 Cynthia and David Rothbard
 Stephen Rotter
 Brice Rowan
 Kimberly and Jim Rowland
 Katherine Ruark
 Carolyn Rubenstein
 Julie and Rick Rubin
 Jessica Rule
 Chris Russell
 Violet Rustad

Alisha and Per Rustberggard
 Ed Ruth
 Michael Rutkowski
 Brent Ryerson
 Adam Saciuk
 Mona Sadeghpour
 Beverly Sagel
 The Sagel Family
 Andrés Salazar
 Sarah and Nick Salvadore
 Brenda and John Sanders
 Nicholas Sanders
 Kerry Santambrogio
 Brittany Sarconi
 Sheila Sasson
 Vincent Saturnino
 Weston Sawtelle
 Gwen and Rick Scalpello
 Hillary and Patrick Scanlan
 Mark Schacht
 Carol Schimmer
 Demo Schmidt
 Lindsey Schneider
 Joel Schonfeld
 Elizabeth and R. Craig Schreiber
 Jill and Scott Schreiner
 Susan and Dave Schulz
 Joy and Frank Fedele
 Katherine Schwarz Friedmann
 Sheri and Tom Schweizer
 Stephanie and Gregg Sciez
 Jacki Scott
 Victoria Hansen and
 Stephen Scott
 Melanie Seatvet
 Heidi Seawright
 Tamie and Allan Sedmak
 Betty and Howard Seeger
 Jeff Seel
 Karen and Chris Segal Fund
 Marty and Wesley Segelke
 Pete Seibert
 Sandi and Jeff Selby
 Jonathon Sera
 Monica Seranni
 Annie and Mike Shafer
 Elizabeth Shafer
 Katharine Shafer
 Carla Shankle
 Julie Shapiro
 Maggie and David Shapiro
 Carter and Jeff Sharfstein
 Jan and Howard Shaw
 Ricki Shaw Sherlin
 Patrick and Deborah Sheehy
 Marilyn and John Shelton
 Shepherd Resources, Inc.
 Susan Shepps
 Taf Sherrill
 Denise L Shibley

Carmel A. Shields
 Marc Shiffman
 Barbara A. Sidon
 Manuel Sierra
 Nick Sikonski
 Sophie Silver
 Denny and Holly Simonton
 Donna Whittington and
 Charles Singer
 Ben Sinnett
 Michelle Skellion
 Ski Butlers
 Carel and Marc Slatkoff
 Slifer Smith & Frampton
 Foundation
 Sandy Smaul
 Jan B. Smedley
 Ali and Erik Smith
 Anne Smith
 BJ and Garrett Smith
 Carol and Michael Smith
 Gregory Smith
 Sharon Smith
 Christiana Smith-Anderson
 Ruth and Randall Sneegas
 Briana Snyder
 Clea Newman Soderlund
 and Kurt Soderlund
 Mary Solberg
 Susan Sonders
 Sonntag Family Charitable Trust
 Craig Sovka
 Molly Sparhawk
 Susan Spaulding
 Kathy and Brian Spear
 Robyn Loring Specthrine
 Toni and Wes Spera
 Mary Griesedieck and
 Jac Sperling
 Bettina and Jay Spickelmier
 Christie and David Spilsted
 Karen Spitz
 Jill and Kit Spring
 Christina and Andrew Spruiell
 Sharon St. Martin
 Denise St. Vrain Perkins
 Jane and Susan Stampe
 Gail A. Stanger
 Karen and Andy Stasko
 State of Colorado
 Laurie Stavisky
 Judi Steel
 Elizabeth Steele
 Judith Stein
 Tom Stephani
 Brett Stephens
 Sterling Rotary Club
 Allison and Cory Stern
 Madeline Stern
 Danielle and Joseph Stewart

Megan and Matt Stewart
 Travis Stewart
 John Stice
 Paul Stillwell, MD
 Drew Stoll
 James Stone
 William Strain
 The Strear Family Foundation,
 Inc.
 Pam Stroker
 Michelle Strollo
 Paula and Melton Strozier
 Linda Stucke
 Debra and David Stull
 Rodger Suchman
 Sandy Sullivan
 Lynne Sullivan
 Megan Sullivan
 Neil and Anne Sullivan
 Sarah and Breandan Sullivan
 Bailey and Donovan Suman
 Nicole Suman
 Shari Summerson
 Audrey and Nick Sunday
 Kris and JP Sunderland
 Tom Svoboda
 Amy Sweeney
 Jamie Lynn Swift
 Cailin Swingle
 T. Rowe Price Program
 for Charitable Giving
 Elena Tafoya
 Mark and Emily Tamberino
 Tammi and Joseph Paoilli
 Target Corporation
 Bryan Taylor
 Jim and Kim Taylor
 Lawrence E Taylor
 Jodi and Kenneth Teague
 Karen and Richard Teague
 Briana P. Tedder
 Cynthia and Vernon Temple
 Bonnie Templeton
 John Templeton
 Andrew Tennenbaum
 Mary Thaler

Raj Thangavelu
 Tamra Tharratt Converse
 The GE Foundation
 David Thibedeau
 Michael Thiel
 Margie Thirlby
 Fred and Terri Thomas
 Donna and James Thomason
 Bayless Thompson
 Keith Thompson
 Rita Thompson
 Tony Thompson
 Peggy and Ron* Thompson
 David Thomson
 Carolyn and Steven Thomson
 Liz and Rodney Thonger
 Kyle Tollotson
 Allison Tomaselli
 Gail and Anthony Tomei
 Janice Tonz
 Ann and David Torgerson
 Suzanne Torris
 Christine Treadwell
 Christine Trigg
 Mimi and Tim Trombatore
 Chris Troxell
 Truist
 Anne and Robert Trumpower
 Matt Trumps
 Carol and Albert Tucker
 Wren Tucker
 Tammi and Justin Tuttle
 Melinda Tye
 Shauna Ugarte
 Salvatore Uliano
 Bryan Taylor
 United Way of Greater
 Kansas City
 United Way of Greater
 Milwaukee & Waukesha
 County
 United Way of Metropolitan
 Chicago
 Dustin Utley
 Vail Mountain School
 Philanthropy Group
 David Valdez
 Elizabeth Valentine
 Kristina and Steve Vardaman
 David Varquez
 Shelly Varvil
 Kevin Vasquez
 Children's Hospital Colorado
 Foundation
 Maureen Veitch Charitable Fund
 Jane Vergari
 Mark Vestevich
 Debbie and Michel Voboril
 Emily and Harry Volz
 Diannia Wagner
 Sharon Walker



Laura and Rabin Walters
 Loretta Warner
 Michelle Warner
 Steven Warrington
 Ethan and Lauren Watel
 Joe Wathen
 Julia and Gregory Weber
 Julie Weihaupt
 Susan and Albert Wehl
 Linda Weinberg
 Sandy Weiner
 Molly and Matt Weiss
 Barbara Weisz
 Alice M. Weisz, MD
 Mary Weisz
 Janice and D. Eric Welker
 Katherine and Steve Wellington
 Amy and Jeremy Wells
 Wells Fargo Bank - Avon
 Brian and Lynda Wenk
 Pamela Werner
 Alice and Larry West
 John and Marissa Westerfield
 Charitable Fund
 Westhaven Capital LLC
 Aletia and Mark Westlake
 Puck Wheaton
 Dana Whelan
 James Whelan
 Katherine and Michael
 Whitcomb
 Jennifer and David White
 LaDonna and Gary Wicklund
 Renee Fielder and Paul Wigton
 Marguerite and Alan Wilaby
 Andrea and William Wilcox
 Vali and Dennis Wilcox
 Emma Jane and Brian
 Wildermuth
 Danielle and Mark Wiletsky, JD
 Greta and Randy Wilkening
 Sandra and John Wilkinson
 Bert Willemse
 Carol Williams
 Miles Williams
 Peggy and Dick Williams

Rachael Williams
 Talena Williams
 Judy and Paul Williamsen
 Ryan Willis
 Patricia and Bob Willoughby
 Chris Wilmoth
 Elizabeth Wilson
 Julia Winger
 Roberta and Scott Winterowd
 Heidi Witherell
 Rick Wojcik
 Tanja Wojcik
 Elaine and Melvin Wolf
 Sheri and Greg Wolfe
 Linda and Dean Wolz
 Betsy Wood
 Ralph Wood
 Peter Woods
 Austin Woodworth
 Elizabeth Worth
 Arnie Wright
 Bill Wright
 Maria and Brad Wright
 Diane D. Writer
 Lynne and Mark Wurzer
 Kenneth Wymore
 Xtra Love
 Diane Yastrub
 Zachary Yeo
 Jean Yien
 Juli Young
 Sandra Young
 Meril and Fred Yu
 Stephanie Zaiser
 Jenais Zarin
 Zastrow Dentistry, LLC
 Amy Zeifang
 Rodrigo Zerlotti
 Patricia Zickefoose
 Zimmer Biomet Alaska
 Katie Zinn
 Laurie Zube
 Janet Zube-Arrington
 Lea Zugschwerdt
 Lorraine Zupon



PAUL NEWMAN LEGACY SOCIETY

Recognizing individuals whose legacy will be celebrated at camp through planned gifts.

Janis Burrow
Kathy Cole
Marla and George Coleman
Alexandra Foley
Craig Foley
Catherine Bennett and Fred Frailey
The Ferguson Family*
The Frechette Family*
Greer and Jack Gardner
Edith and Louis Gitlin
Lia Gore, MD and Frank Haluska, MD
Susan and Rich Jones
Betty and Clinton Josey
Lisa and Ken Kraft
Sonia and Lester** Mandell
Mona Look-Mazza and Tony Mazza
Bob and Gretchen Ravenscroft
Ruth B. Johnson, JD
T. Denny Sanford*
Suzanne and Bernard Scharf
Julie and Hugh Sullivan



* Inducted into the Paul Newman Legacy Society as a lifetime contributor to camp
** In Memoriam

FOUNDERS' CIRCLE

Recognizing visionary supporters whose gifts have transformed the lives of campers in the past, present, and future.

T. Denny Sanford
Knapp Mandell Family
Hermes Group
David and Francie Horvitz
Gates Frontiers Fund
The Frechette Family Foundation
The Ferguson Family
Kathy and Trent Cole
Paul Newman/ Newman's Own Foundation
The Foley Family
Gretchen and Bob Ravenscroft
The Gogel Family
Daniel and Janet Mordecai



GIFTS IN TRIBUTE

Tribute gifts are an extraordinary way for donors to appreciate, honor, celebrate, or remember those who are special to them. We are grateful for your support. *An asterisk * indicates someone who is deceased.*



Tom Alexander*

Live Large Love Loud

Debbi and Lee Alpert

Shereen and Michael Pollak

Dakota Anderson

Cathy Davis

Samantha and Scott Anshutz

Elkay Sales

Calypso Balbona

Nathalie and Luis Balbona

Kennedy Barndt

Joel Barndt

Emily Barr, CPNP, CNM and Mark Barr

Anonymous
Mark Barr
Chris Burruto
Jennifer Collins
Cooper Couch
Kimmy Darling
Steve Gardner
Marie Therese Guirgis
Kelly Knight
Juliane H. Lee, MD
Allison McIntyre
Janet Meredith
Amy Sweeney
Stephanie Zaiser

Richard Becher*

Marci McCalley

Cheryl Bennett*

William S. Bennett

Catherine P. Bennett and Fred Frailey

Barbara Frailey
Ruth Johnson and Kris Sabel
Katie and Mike Santambrogio

Marjorie Bennett*

Patricia Zickefoose

Betty Berger

Anonymous

Joshua Bissett

Catherine Bledsoe

Caron Blanke

Sheila Sasson

Marita C. Bledsoe, MD

Anonymous
Sheri and Tom Schweizer

Jill Bossow

Melanie Seatvet

June Brammer*

Angie and Dave Brammer
Janice and Bob Brammer
Jennifer and Charlie Brammer
Mark Brammer
John DeWidt
Northrop Gumman Corporation

Ruth Johnson and Kris Sabel
Karen and Robert Peterson

Samantha and Michael Busenhart

Cynthia Maloney

Finley Cartum

John Forester

Anne and Jim Cauthorn

Joanne S. Crosby

Evelyn and Lincoln Clark

Barbara and Lawrence Clark

David Cohen, MD

Karen and Chris Segal
Donna and James Thomason

Trent Cole*

Christopher Rebich
Susan and Jim Buck

Jesse Coren

Molly Frantz

Brenda and Bruce Couch

Cooper Couch

Susan and Ed Cudahy

Jolie Lehman

The Honorable Wiley Daniel*

Betsy and Dennis Cheroutes
Ruth Johnson and Kris Sabel
Cynthia Kahn
Peggy and Ron Thompson

Taylor Denney

Patricia and Arnold Fridland

Aidenne Dietel

Josephine Munsell

Dave Dirks*

Anonymous

Max Donahoe

Bates Family Foundation

Brian Donovan

Dennis Donovan

Margaret and Cleive Dumas

Michael Benedict
Deborah and John Gardner
Haley and Michael Pearson
Judy and Tom Pecsok
Connie and Chuck Powers
Susan and Peter Riccardella

John Forester

Charles Forester
Richard Forester
Kirstin and Chris Heinritz

Bette Foster

Joanne S. Crosby

Sawyer Fricks

Michael Thiel

Gerald Gallegos*

Mimi and Tim Trombatore
Amy Woodworth

Greer and Jack Gardner

Andrew Gardner
Roger Michaud

Brayden Gold

Herbert Buchwald
Deborah Friedman

Jennifer Goldstein

Katherine Schwarz Friedmann

Bob Gollick*

Kim Gollick

Kiki Gore*

Wendy and Steven Cohen
Ruth Johnson, JD and Kris Sabel
Katie and Mike Santambrogio
Alyson Kinkade-Russell
Greta and Randy Wilkening

Lia Gore, MD and Frank Haluska, MD

Marsha Engel
Molly Hemenway, RN, PNP
Katie and Mike Santambrogio
Katherine and Steve Wellington
Greta and Randy Wilkening

John R. Gorman

Anonymous
Heather Dorr
William Gorman, MD
David Hardt
Marilyn Krasusky
Corie Pierce
Sally and Robert Rife
Chris Wilmoth

Sheika and Pepi* Gramshammer

Joanne S. Crosby

Koby Gruenwald*

Anonymous
Tamra Dollin
June and Ivor Garlick, MD
Gabriela and Peter Gottlieb
Jamie Hahn
Andrew Leibowitz
Linda ad Rick Mishkin
Julie and Rick Rubin
Joel Schonfeld
Sandy Smaul

Carter Hall*

Heidi Seawright

Chance E. Hargrave

Anonymous

Oliver Harrington

Dan LeVan

Matthew Harrison

Ann Eggers
Mary Roche

Daphne Hearn

Stephanie Hearn

Patricia Heisel*

Gwen Sullivan

Amy and Micah Hemenway

Dave and Mary Erb

Molly Hemenway, RN, PNP

Phyllis Bursma

John Hermes*

Kent and C. Barnes
Audrey and A. John Hermes
Ruby and Stephen Loveless

Suzanne and Lawrence Hess

Mary Rose and Leonard Pellettier

Linda Hendricks

Ruth Johnson and Kris Sabel

Betsy Hill*

Anonymous

Betsey Holley

Jack G. Hiehle

Sammy Horowitz

Anna Goldberg

Sharon and Rick Ingersoll

Bev Brown

Brody Issel

Bruce Ely

Katie Jansen

Morgan Presley
Bayless Thompson

Kurtis Johnson

Kenneth Molzer

Ruth Johnson and Kris Sabel

Brenda and Alan Himelfarb
Madeline Stern

Nick Keller

Mary and William Kennedy

Catherine Kelley*

Lego Community Fund
Debbie McKitterick

Judy Kihle*

Anonymous

Joanne and Art Kleinstein

Paula Axelrod

Knapp Mandell Family

Ruth Johnson and Kris Sabel

Sierra Kniss

Owen Kniss

Leighton Kohlmann

Molly McMerney

Grace Koontz

James Koontz
Cailin Swingle

Rochelle Kramer*

Mary and Reid Marsh

Laine and Merv Lapin

Joanne S. Crosby

Peg Latourette

Marita C. Bledsoe, MD

Chris Lawler*

Rachel Akeson





Kiuck, MD and Oksoon, MD Lee*
Juliane H. Lee, MD

Jayden Leija
Sterling Nell Leija

Sterling Nell Leija
Stanley Lapidos

Pam and Jerry Levitz
Sheila Sasson

Katherine Lind
Donald Huffner

Deborah Liptzin, MD and Clay Hoser
Sharron and Benjamin, MD Liptzin

Gina and Jim Lorenzen
Steve Lewis

Bryson Mackie
Linda Stucke

Blake Maher
John Forester

Donna and Patrick Martin
Nancy Groff
Katie and Mike Santambrogio

Max Marvin*
Victoria ad Brett Mueller

Ann Matey*
Anonymous

Mini Maytag
Joanne S. Crosby

Ethan McGee
Jenny Hejtmanek
and Doug Tremblay
Ruth Johnson and Kris Sabel

Emmory McQueen
Allison and Thomas McQueen

Donna Meyer
Joanne S. Crosby

Haya and Steve Meyer
Sheila Sasson

Alexandra Milmoie*
Cornelius Milmoie

Janet Mordecai
Lieba Alpert
Zondra Pluss

Sammie Morgan*
Rocky Mountain Pediatric
Heart Surgery

Julie and Spencer Morrison
Ian O'Dell

Flynn Moser
Marka Moser

Sara Murphy
Alliant National Title Insurance

Matthew Murray
J. Moon-Murray

Zoe Nix
Nancy and Mark Hackbarth

Johann and Karen Oberlohr
Anonymous

Stacey and Trey Odom
Deann R. Thoms

Stacy Oliverio*
Bob and Rosie Tutag

Ezra Orihuela*
Rocky Mountain Pediatric
Heart Surgery

Annika and Collin Payne
Brenna and Mike Payne

Dante Perkins-Stanford
Rachelle Nuss, MD and
Stuart Rosenberg

Grace Petroff
Karen and Jeff Petroff

Andrea and Bill Phelps
Steve Lewis

Don Proffit*
Frances and Vincent Jones

Bobby Richardson*
Theresa Richardson

Paula Ricks Langridge*
James McGill and Bob Ricks
Foundation

William Roth
Anonymous

LuCele Sabel*
Ruth Johnson, JD and
Kris Sabel

Andrew Sagel
Anonymous
Julie and Mike Chapman

Diane Samet
Harriet and Michael
Greenstein

T. Denny Sanford
Michelle Pius
Katie and Mike Santambrogio

Katie and Mike Santambrogio
Susie Davis
Jodi and Ken Teague

Debbie and Jim Schultz
Janet A. Kenien

Sheri and Tom Schweizer
Carolyn Rubenstein

Molly Segre
Anonymous

Susan and Geoff Shamos
Kirsten and Tim Collins
Molly and Taylor Kirkpatrick

Alexandra Shankle
Carla Shankle
Michael Slevin
Melanie Seatvet

Carle Sharp
Joanne S. Crosby

Axel Soto*
Anonymous

Tristen Spickelmier
Stephanie McCarthy

Paul, Emily, Jack and JP St Ruth
Ruth Johnson and Kris Sabel

Skyler Stasko
John Forester

Lewis Stat*
Elizabeth Stern

David Stern*
Jan and Wayne Abbott
Anonymous
Patricia and James Bain
Nancy Berg
Maxine and Jerry Bizer
Melissa Chua
David Cohen, MD
Marla and George Coleman
Tina Fleishman
Greer and Jack Gardner
Dave Jeser
Ruth Johnson, JD and
Kris Sabel
Elaine Kodush
Jane Marcus
Rebecca Margulies
Mena Moran
Diane and Jim Newsom
Barbara and Bob Rosen
Katie and Mike Santambrogio
Debbie and Jim Schultz
Denny and Holly Simonton
Susan Sonders
Allison and Cory Stern
Madeline Stern
Michelle Strollo

Julie and Hugh Sullivan
Andrew Tennenbaum
Leewood and Thomas
Woodell

Elizabeth Stern
The Taft Foundation

Leslie Stern*
Debbie and Jim Schultz

Matthew Stevenson*
Matthew T Stevenson Scholar-
ship Trust

Teagan Stewart
Danielle and Joseph Stewart

Ann Sullivan*
Gwen Sullivan

Julie and Hugh Sullivan
Karen Benner
Alessandra Biagioni
Dreux and Richard Claiden
Judy Foley
Ruth Johnson and Kris Sabel
Linda Graef Jones
Jean Hanson
Mary and Reid Marsh
Nancy and Matthew McKenna
Tracy Flanigan McVey
Cynthia and Bryan Mix
Jean Sullivan and David Nassif
Andrew M. Paul
Caroline Pyle
Katie and Mike Santambrogio
Mary Thaler
Jane Vergari
Maureen Veitch Charitable
Fund
Linda Graef Jones
John and Marlissa Westerfield
Charitable Fund

Sophie Helena Treadwell
Christine Treadwell

Sandy Treat*
Leewood and Thomas
Woodell

Emily Trumps
Matt Trumps

Riley Tuttle
Margie Thirlyb
Tammi and Justin Tuttle

Callie Jane Vickers
Julien Gradnigo

Britta Volz
Emily and Harry Volz

Bev and Bruce Wagner
Anonymous
Ruth Johnson and Kris Sabel

Brooks Wallace
Dorinda B. Armstrong

Susan and Tom Washing
Ruth Johnson and Kris Sabel

Carole A. Watters
Ruth Johnson, JD and
Kris Sabel

Mara Webber
Kate and Rodley Ellis

Kristine Weisz, MD and Keith Weisz, MD
Alice M. Weisz, MD

Andria John Welch
Beverly and Jon Myers

Leewood and Thomas Woodell
Kerrin and Peter Bermont
Vicki and C. Bourret
Adam Carlin
Lynn and Graham Fulton
Kate Ligare
Shirley and William McIntyre

Amy Woodworth
Austin Woodworth

Kristy and William Woolfolk
Ruth Johnson and Kris Sabel
Katie and Mike Santambrogio

Marie and Matthew Wright
Elizabeth Albright
Brian and Lynda Wenk
Don Yale

Eliana Yelapaala
Genery Booster and
Geoff Shamos

Sara and KP Yelapaala
Amy and Matt Nofziger

Megan and Adel Younoszai, MD
Christie and David Spilsted

Tanner Zerr
Stacy and Randy Zerr

Robin Zupanec
Joy and Dave Ortiz

IN-KIND DONORS

Gifts from in-kind donors help meet the needs of campers by reducing operating expenses and enhancing programmatic opportunities at camp.

10th Mountain Whiskey & Spirits
A Line Boutique
Abercrombie & Fitch
Natalie Abramson
Access Unbound
Active Energies Solar, LLC.
AED Authority
AEG Presents
AeroColorado
AlpinAire Healthcare
Alpine Bank
Annie's
Applejack Wine & Spirits
Archery Games Denver
Arkansas Valley Adventures
The Arrabelle at Vail Square
Artifact Uprising
Arvada Rentals
Aviano Coffee
Mindy Banks, MD
Barre Rhythm Eagle
Sharon Bell
Terry Benedict
Betterish
BTC Services
Marita C. Bledsoe, MD
Bliss Studio
Bloomingvails
Blue Plate
The Bookworm
Boone's Wine And Spirit
Brave Hoods
Kandace Buehrle
Bully Ranch
Casey Concrete
Robert and Barbara Cherrington
The Children's Hospital
Association Colorado
Chippen Nails West
City Market-Eagle
Wendy and Steven Cohen
Colorado & Company 9 News
The Club at Cordillera
CordilleraCares
Corepower Yoga
Cornett Enterprises Inc
Country Club of the Rockies
Coyote Cafe
The Craftsman & Apprentice
Carolyn and Byron Craig
Lynette Dallas
Cindy Daugherty
Mary and David Davies

Define Salon
Denver Center for Performing Arts
Denver Escape Room
DesignWorks
DJ's & Dahlias Cafe
Donni
Doubletree by Hilton, Vail
Eagle Diner
Eagle Ranch Golf Club
Eagle Sinclair
Epic Escape Game
Epic Mountain Express
Epicurean Group
Etown
EventRents
Fall Line Kitchen and Cocktails
Faux Shaux Finishing
Feel Good Brands Corporation
Fiestas
Regina and Kyle Fink
First Chair Designs, Inc.
Patti Burrows and Frank Flood
Foods of Vail
Four Seasons Resort Vail
Catherine Bennett and Fred
Frailey
Frost Creek
Fusion Hair Studio
Gallegos Corporation
Linda Galvin
Grace and Steve Gamble
Greer and Jack Gardner
Getaway to Give
Giovanny Alexander
The Golden Bear
The Golden Eagle Inn
Gorsuch Vail Village
Halcyon Hotel
Hartmann Photography
Hasbro, Inc.
Hawthorne Suites Eagle
High Altitude Quilting Guild
Highline
Holiday Inn Club Vacations
Home Outfitters
Hot Mamas Exercise
Hotel Talisa
Hovey & Harrison
Inn at Riverwalk
Inspirato
Matthew and Jessica Ivanoff
Ivy Nails
J. Cotter Gallery

Jack Affleck Photography
Alexis Jamison
Jay's Valet Parking
Johnson and Repucci, LLP
Juniper Restaurant
Karin's
Jennifer and Barton Kellogg
Kendra Scott Design Inc.
The Kind
Sherry and Jim Kittle
Shane Kleinstein
Kroenke Sports Holdings
La Tour Restaurant & Bar
Lady Jones
Laura Orozco Photography
Lauren's Kitchen
Lil' Dudes and Daisies
Lindblad Expeditions
Lovely Nails
Lynx Grills, Inc.
Gail and Joseph Mahoney
Main Street Grill
Manor Vail Lodge
Maria Empanada at Stanley
Mitzi Marquez
Alexandra and Ron Mastriana
Matsuhisa
Maya Walker Jewels
Medical Air Systems, Inc.
Meg's Designs
Eric Meyer
Monaghan Medical Corporation
Mountain Beverage Company
Hazel and Matthew Murray
NBC
Nina McLemore Boutique
Northside Coffee & Kitchen
Oh La La Hair Salon
Old World Wines
Oxotic
Peak 1 Express
Pepi Sports, Inc.
Perch
Pilates Evolution of Cherry Creek
Pinecones
Piney River Ranch
PK Gibeon Photography
Plaid Enterprises, Inc.
Prescott Gallery and Sculpture
Garden
Q Boutique
Quality Italian
Robin Rathke



Rebel Bread
The Ritz-Carlton, Bachelor Gulch
Riverwalk Theater
The Rose
Route 6 Cafe
Rowen Christian Couture LLC
Katherine Ruark
Ruggs Benedict
Ruth Johnson and Kris Sabel
Sauce on the Creek
Debbie and Jim Schultz
Shanahan's Steak House
Shepherd Resources
Signature Signs
Ski Country Dry Cleaning
Skipper & Scout
Pamela and Richard Smith
Slifer Designs
Smith Story Wines
Sotheby's
Spiegel Construction, Inc.
Splendido at the Chateau
Spotted Hounds
Stem Ciders

Elizabeth and David* Stern
Kirsten Stewart
Joanne and Frank Strauss
Stretch Lab - Cherry Creek
Sun & Ski Sports
Sweet Basil
Sweet Pea Designs
Leigh Tarrant
The Curtis - A Doubletree by
Hilton
Trout Trickers
Tula Med Aesthetics
TV8 Vail
Vail Daily
Vail Dentistry
Vail Dermatology - Bella Derma
PLLC
Vail Executive Cars
Vail Health
Vail Honeywagon, Inc.
Vail Resorts
Vail Resorts Epic Promise
Vail Valley Foundation
Valbruna

Lois and John Van Deusen
Vendetta's
Venice Ristorante - DTC
Venture Sports
Venzor Construction
Vilar Performing Arts Center
Vin48
The Vineyard
Vista Restaurant
Wagner Equipment
Wagner Rents
Walmart
Janis and Roger Ward
Carole A. Watters
Wendy Griffith Photography
West Flanders Brewing Co.
Whitewater Express Car Wash
Wishes Toy Store
Kristy and William Woolfolk
Wyndham Resort - Avon
Wyndham Vacation Ownership
Sara and KP Yelapaala
Yours Truly Cupcake

THANK YOU CORPORATE SPONSORS

Recognizing corporate donors who contributed \$5,000 or more in FY2019 (November 1, 2018 through October 31, 2019).

\$499,999 to \$100,000

Abercrombie & Fitch



\$99,999 to \$50,000

THE ANSCHUTZ FOUNDATION

\$49,999 to \$10,000



D.H.W. Energy, Inc.



The Kettering Family Foundation



\$9,999 to \$5,000



Summit Investors, LLC



WE'RE PART OF SOMETHING SERIOUSLY AWESOME.

Roundup River Ranch is proud to be a member of SeriousFun Children's Network. Founded by Paul Newman, this is a growing global community of independently managed and financed camps and programs. We are honored to join forces with this network that spans the world with 30 camps and programs serving children from over 50 countries and throughout five continents.



For kids ages 17 and under with serious illnesses (and their awesome families) we offer extraordinary camp experiences and the blissful joy of being an "ordinary" kid. Always free.

8333 Colorado River Road, Gypsum, CO 81637 | 970.524.2267

 RoundupRiverRanch.org

